

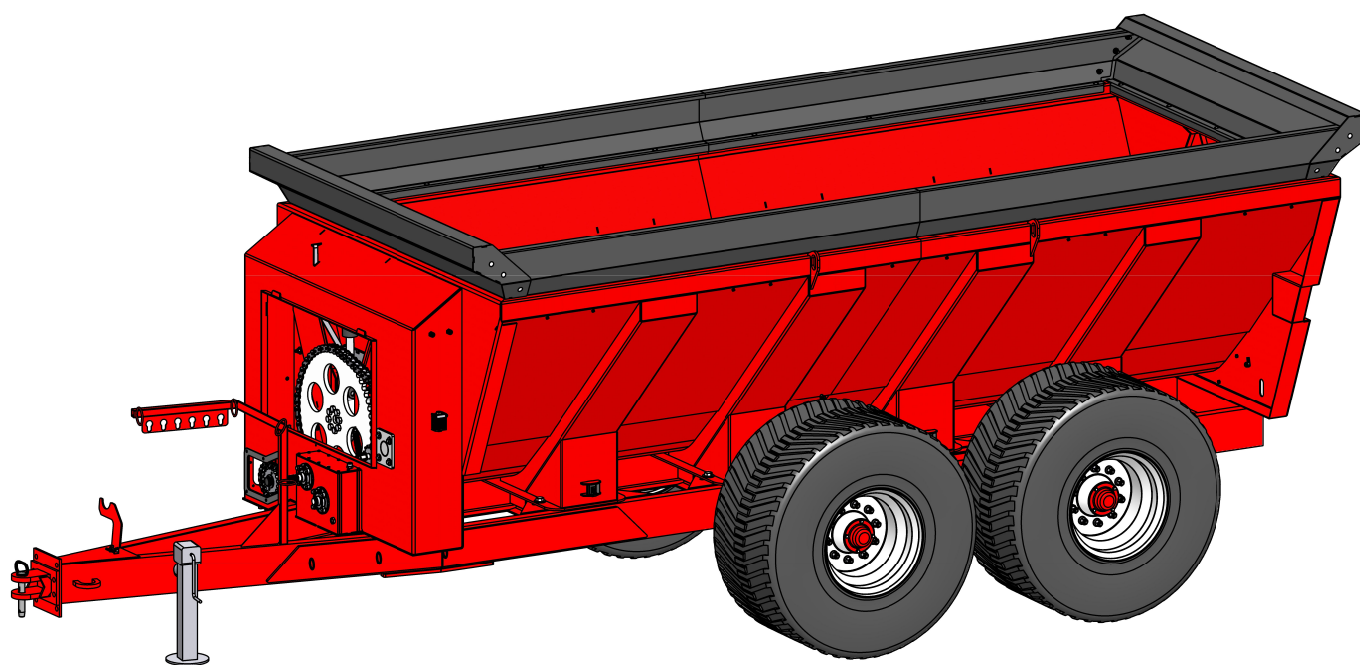
Semi-Liquid Manure Spreader 2500 - 3300 Gallons



Service & Maintenance guide

-

Semi-Liquid Manure Spreader 2500 and 3300 Gallons



Les Équipements Woody inc. 205, rue commercial Saint-Odilon, Québec G0S3A0
Tél./ Tel. 418-464-2748 Fax. 418-464-2746

Courriel/Email: info@equipementswoody.com Site Web/ Website :
www.equipementswoody.com Facebook: Les Équipements Woody

Rev.2023-11-28

Contents

Introduction.....	1
Warranty.....	2-3
Safe maintenance.....	4-9
Storage.....	10
Front Mechanics for 540/1000 RPM Spreader.....	11-12
Lighting system.....	13
Impeller 2500 & 3300 gallons.....	14-15
Complete transfer gear 48-006-26.....	16
Complete transfer gear 48-006-24.....	17
Spreader side 2500 Gal.....	18
2500, 3300 Gallon Spreader Rear.....	19
Hydraulic diagram auger Spreader 2500-3300.....	20
Hydraulic diagram hatch Spreader 2500-3300.....	21

Semi-Liquid Manure Spreader

2500 & 3300 Gallons



Thanks you!

We congratulate you on acquiring a Woody Semi-Liquid Manure Spreader. Woody Equipment designs and manufactures equipment according to very rigorous criteria. These equipment are intended for professional use in the agricultural sectors.

Woody Equipment reserves the right to modify and/or improve equipment and maintenance instructions, as well as revise data without prior notice.

Please take note of the serial number, model, delivery date, distributor, and the seller's name. Keep this information available for ordering parts, as well as for any technical assistance or warranty inquiries.

Serial Number _____

Model _____

Delivery date _____

Distributor _____

Vendor name _____

Limited One-Year Warranty

General Warranty

Woody Equipment Inc. (hereinafter referred to as "Woody") warrants that its products are free from defects, subject to the conditions outlined below.

All products manufactured by Woody (excluding commercial or industrial use and abuse) are covered by a one (1) year warranty applicable from the date of purchase, unless otherwise specified on the sales contract for any specific adjustments to the warranty.

The warranty is offered solely to the original purchaser of the Product and cannot be transferred to subsequent purchasers and/or retailers of the buyer unless explicitly authorized by Woody in writing. Woody warrants that mechanical, hydraulic, and electrical components will be free from defects in material and workmanship for the warranty period. The warranty covers all parts of the new product, except hydraulic hoses, hydraulic fittings, and electrical wires, and includes labor performed by Woody or an authorized Woody retailer.

Repair and Replacement Service

All repairs must be carried out by Woody or an authorized retailer with written consent from Woody, otherwise the warranty will be voided. Woody reserves the right to repair or replace, at no cost to the buyer, any parts deemed defective due to material or manufacturing defects. Woody also reserves the right to determine if improper use, lack of maintenance, or abusive use by the buyer was the cause of the defect.

In the event of a failure caused by a part covered by this warranty or by the factory assembly, the buyer must: (1) immediately notify Woody of the nature of the defect; and immediately cease the use or operation of the product, except with the written consent of Woody.

Warranty service must be performed at the point of purchase of the product, either by Woody or by a retailer using parts provided by Woody.

If the product was purchased directly from Woody, the buyer must return the product or defective parts at their own expense and without delay. If Woody determines that the parts are defective, they will repair or replace them, and if the product has been returned to Woody, they will install the parts at no cost to the buyer.

If the product was purchased from a retailer, Woody will provide replacement parts to the buyer through the retailer. The retailer will install the replacement parts and return the replaced parts to Woody at the buyer's expense within thirty (30) days of the repairs. Parts and labor will be provided at no cost to the buyer on the condition that it is proven to Woody's satisfaction that the replaced parts were defective.

In all cases, the buyer is responsible for transportation costs of parts or the product, any additional time incurred at the buyer's request, and any service and/or maintenance expenses.

All parts replaced under this warranty remain the property of Woody.

If the buyer fails to comply with the procedure described above, or if it is not proven to Woody's satisfaction that the parts are defective, the buyer will not be entitled to the warranty.

Limited One-Year Warranty

Warranty Exclusions

The retailer is not authorized to make any representations or promises on behalf of Woody, nor modify the terms and limitations of this warranty in any way.

Warranty Exclusions

This warranty does not cover the following items:

This product requires periodic parts and maintenance to function properly. This warranty does not cover repairs when normal wear has exhausted the useful life of the equipment or due to neglect in product maintenance, neglect in product storage, or failure to adhere to the usage standards prescribed by Woody.

This warranty does not cover damage to the product or machinery during installation caused by the buyer or the retailer during product installation or due to improper product installation.

This warranty does not cover parts or labor if the product is deemed to have been misused, neglected, involved in an accident, abused, modified, or any defects that may arise as a result of product modification not approved in writing by Woody.

This warranty does not cover travel time and does not cover any other transportation expenses for warranty repairs or for any expertise.

Other Exclusions

This warranty excludes:

- Visible defects including paint and decals, etc.
- Breakage resulting from machine overturn or any accidents.
- Defects due to natural disasters and other major events beyond Woody's control.
- Problems caused by parts other than those from Woody.
- Certain items are subject to warranty by their respective manufacturer.

Limitations of Implied Warranty and Indirect Damages

Woody is not responsible for any damages, including bodily injury, loss of products, rental of replacement equipment, transportation, or any other secondary or indirect claims arising from the use of this product by anyone that may occur due to a malfunction of this product.

Safety and Maintenance Guidelines

Warning. This section provides guidelines to help ensure the safety of individuals working with and around the manure spreader and outlines important safety instructions. The operator of the manure spreader and the carrier must have a good understanding of these carrier safety guidelines before using this equipment. Woody Equipment assumes no liability for any injuries or damages that may occur if these guidelines are not followed.

General Guidelines

Observe all federal safety regulations and/or other regulations applicable to hydraulic mechanisms, lifting devices, spillage, and disposal of hydraulic oil.

Ensure that the manure spreader is safely equipped in accordance with federal regulations and state or provincial regulations.

Service and Maintenance Guidelines

The installation and removal of the manure spreader, as well as all maintenance and repairs, should be carried out by qualified mechanics experienced in hydraulic devices and/or an authorized repair workshop.

Welding on the manure spreader can cause structural damage. Before welding on the manure spreader, please contact Woody Equipment or your representative for authorization. Disconnect the power cord, both battery cables, the radio, and any electrical accelerator and alternator connections. Ensure that the grounding wire does not make contact with any moving parts of the manure spreader or the carrier (gearbox, bearings, cylinder, etc.). Position the grounding wire so that the welding current does not pass through the bearings. Place the grounding wire as close as possible to the welding area.

Excessively tight or loose bolts may cause parts to detach, resulting in damage, serious injuries, or death. Properly maintain bolts and nuts by regularly inspecting, tightening and lubricating them.

Electrical Guidelines

To prevent the manure spreader or the carrier from coming into contact with an electrical line, follow these guidelines:

- Before starting work with the manure spreader, inspect the work area for any electrical lines that you may need to work under or near.
- Treat all electrical lines as energized and dangerous. It may not be possible to de-energize the power in the work area.
- Maintain a distance between electrical lines and all parts of the manure spreader and the carrier according to the following formula: two times the length of the insulating line plus 10 feet.

For example: if the insulating line is 6 inches long, the distance to stay away from is $2 \times 6 \text{ inches} = 12 \text{ inches}$ (1 foot), plus 10 feet, which equals 11 feet. You should stay at least 11 feet away from the electrical line.

- If the manure spreader or the carrier comes into contact with an electrical line, follow these steps:
 - Stay inside the carrier.
 - Do not allow anyone to touch the manure spreader or the carrier.
 - If you believe you can move the manure spreader or the carrier away from the line without pulling the line down, slowly and smoothly move away.
 - If you think you will pull the line down as you move away, contact the electric company to have the power to the line cut off.

Safety and Maintenance Guidelines

- If it is not possible to cut off the power or if the Manure spreader or the carrier begins to burn, jump away from the carrier in the following manner:

1. All parts of your body should leave the carrier at the same time. If one part of your body touches the ground while

another part is still in contact with any part of the carrier or the Manure spreader, the electricity in the line will pass through your body.

2. Keep both arms forward and close to your body, and both legs and feet together.
3. Jump with your body forward so that you will not fall backward or toward the carrier when you land.
4. Once you have landed, quickly move away from the carrier at least the same distance as determined by the formula provided earlier in this document.
5. Immediately notify the electric company of the situation.

Safety Instructions

Following the Manure spreader's specifications, the RPM (revolutions per minute) must be respected. Working above this recommendation can cause mechanical damage to the Manure spreader, personal injury, and also void the equipment warranty.

When working on the Manure spreader, it is always recommended to wear protective gloves and safety glasses, especially when working with the chains and gears and lubricants.

! If you have a cracked or broken piece, the piece must be replaced to prevent mechanical damage or personal injury. Ensure that all bolts are tightened properly.

Operation

All operators and maintenance personnel must read and understand this manual and all safety information before using this equipment.

The safety of all personnel within the work area depends on the proper operation and maintenance of the manure spreader. This section explains how to properly operate the Manure spreader. The following procedures are covered:

- Pre-start preparation of the Manure spreader.
- Starting the Manure spreader.

Refer to provincial or state regulations for minimum age, training, and qualifications required to operate a manure spreader.

! Only use the Manure spreader for the operations for which the product has been designed and use it according to the instructions provided in this manual. Woody assumes no liability for property damage, injuries, or death that may occur as a result of not following the instructions in this manual or for any operation that does not comply with provincial or state regulations for Manure spreaders.

Pre-Start Preparation of the Manure spreader

To ensure the safety of all personnel in the work area and to avoid damaging the carrier or the Manure spreader, follow these steps before using the Manure spreader.

1. Regularly inspect the Manure spreader according to the Maintenance Schedule in this manual.
! Before cleaning, inspecting, or lubricating the Manure spreader, stop the carrier engine and remove the key to prevent anyone from starting the engine. Allowing the carrier engine to run during these procedures can result in unexpected movement of the carrier or the Manure spreader, potentially causing property damage, bodily injury, or death.
2. Repair any damage found during the pre-use inspection before operating the Manure spreader.
 - If the Manure spreader has a hydraulic oil leak, stop the carrier. High-pressure hydraulic oil can penetrate the skin and cause severe injuries, gangrene, or death.
3. Pay attention to and note the location of all electrical lines in the area where you are working. If possible, have the power to these lines cut off.
4. All personnel in the area where the Manure spreader is in operation must be at least 150 meters/165 feet away from the carrier and the Manure spreader.
5. Only the operator should be in the carrier once the Manure spreader is started. Operating the carrier or the Manure spreader with people on board can result in serious injury or death.
6. Securely connect the spreader's PTO to the carrier.
7. Run the PTO at 540/1000 rpm before opening the side door.

Starting the Manure spreader

Once the above steps, Pre-start Preparation of the Manure spreader, have been completed, you can start the Manure spreader.

Maintenance schedule

Maintenance directive

This section explains how to extend the life of your Woody manure spreader through regular maintenance. Maintenance involves regularly performing the tasks listed in the Maintenance Schedule in this manual.

- ! If you hear any unusual noise, immediately stop the carrier engine and check the gearboxes, shafts, pallets, wheels hubs, and structure for potential damage.
- ! Always stop the carrier engine when you want to clean, inspect, or work on the Manure spreader. Do not install a damaged component on the manure spreader, as it can result in property damage, injuries, or death.
- ! Before cleaning, inspecting, or lubricating the manure spreader, stop the carrier engine and remove the key to prevent anyone from starting the engine. Allowing the carrier engine to run during these procedures can result in unexpected movement of the carrier or the manure spreader, potentially causing property damage, injuries, or death.
- ! Making unauthorized modifications to the manure spreader will void the warranty. Modifications can compromise the safety and operation of the manure spreader.

Preparation for Maintenance

To keep your manure spreader in optimal working condition and help ensure the safety of personnel, follow the Maintenance Schedule provided in this section.

If your manure spreader is used in extreme temperatures (below 0°F/-5°C or above 100°F/40°C), in harsh conditions, or operates for more than 50 hours per week, inspect and lubricate the manure spreader at shorter intervals than those specified in the Maintenance Schedule.

Thoroughly clean the manure spreader before each inspection using the following methods:

- Pressure washing.
- Remove any remaining dirt, ice, snow, excess oil, and grease that may conceal cracks, leaks, loose bolts, or other issues.

Maintenance schedule

The following table demonstrates the maintenance schedule that will keep your Woody manure spreader in optimal working condition and ensure personnel safety.

Item	Maintenance Schedule
Check the oil level of the gearboxes.	Weekly or 50 hours
Visually inspect the driveshafts for cracks or damage, and replace them if necessary.	Weekly or 50 hours
Visually inspect the guards to ensure they are intact, and replace them if necessary.	Weekly or 50 hours
Clean the drive couplings and lubricate them with fresh grease.	Weekly or 50 hours
Grease fittings, 10cc per fitting.	Weekly or 10 hours
Visually inspect the pallets for cracks or breaks, replace if necessary, and torque the bolts to 350 lbs-ft.	Weekly or 50 hours
Check the hoses for cracks or leaks and replace them if necessary.	Weekly or 50 hours
Inspect the cylinders for cracks and repair or replace them if necessary.	Weekly or 50 hours
Check the cylinders for leaks and replace the seals if necessary.	Weekly or 50 hours
Check the hydraulic fittings for leaks, cracks, or damage, and replace them if necessary.	Weekly or 10 hours
Check that your hub bearings are tight and lubricated.	Weekly or 50 hours

Maintenance schedule

Lubrication of the manure spreader

Lubricate the manure spreader after it has been working for several hours, as the new grease penetrates more easily when the old grease is warm. After lubrication, wipe off any excess grease from all surfaces of the manure spreader.

Material needed

- Use EP2 grease or equivalent to lubricate your manure spreader. This grease can be used in summer conditions.
- Use EP1 grease or equivalent to lubricate your manure spreader. This grease can be used in winter conditions.
- The grease should have excellent water resistance, rust protection capabilities, good adhesive properties, and mechanical stability.
- A grease gun set to dispense 2 ml/0.12 cubic inches of grease per stroke should be used. If using an automatic greaser, ensure that it is dispensing the correct amount.

! Shut off all power sources from the carrier to ensure safe working conditions.

Storage

This section explains how to store your manure spreader. Proper storage ensures the safety of personnel and extends the lifespan of the manure spreader.

Before storage

Before storing your manure spreader, do the following:

- Remove any dirt, oil, and grease residue with a cloth and cleaning solution. These debris can hide cracks, leaks, loose bolts, and other issues.
- Inspect the manure spreader for cracks, worn or missing parts, vandalism, leaks, or other damages. Follow the Daily Inspection schedule in the Maintenance Program section of this manual.
- Repair any damages found during the inspection before storing your manure spreader.
- Lubricate the manure spreader according to its next scheduled lubrication as determined in the Maintenance Program schedule (see the Maintenance Program section in this manual).
- Store the manure spreader flat on a stable surface in a dry location, avoiding storage on grass or wet surfaces.

After storage

Before using your manure spreader after storage, follow the procedures below:

- Remove any dirt, oil, and grease residue with a cloth and cleaning solution. These debris can hide cracks, leaks, loose bolts, and other issues.
- Inspect the manure spreader for cracks, wear, loose or missing parts, vandalism, leaks, or other damages. Follow the Daily Inspection schedule in the Maintenance Program section of this manual.
- Repair any damages found during the inspection before operating your manure spreader.
- If the manure spreader has been stored for 3 months or more, inspect the manure spreader and lubricate it according to the Daily and Weekly Lubrication schedule in the Maintenance Program (see the Maintenance Program section in this manual).

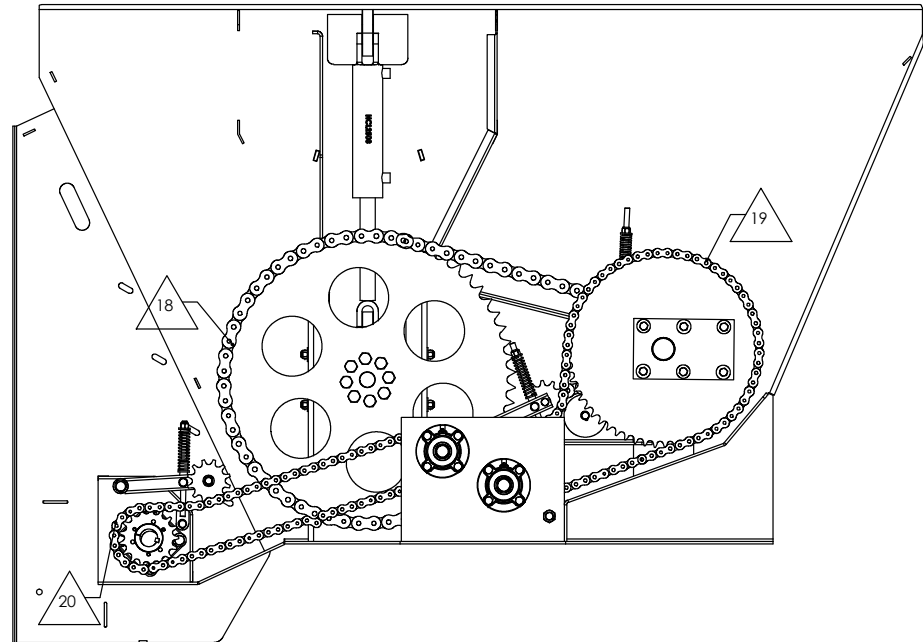
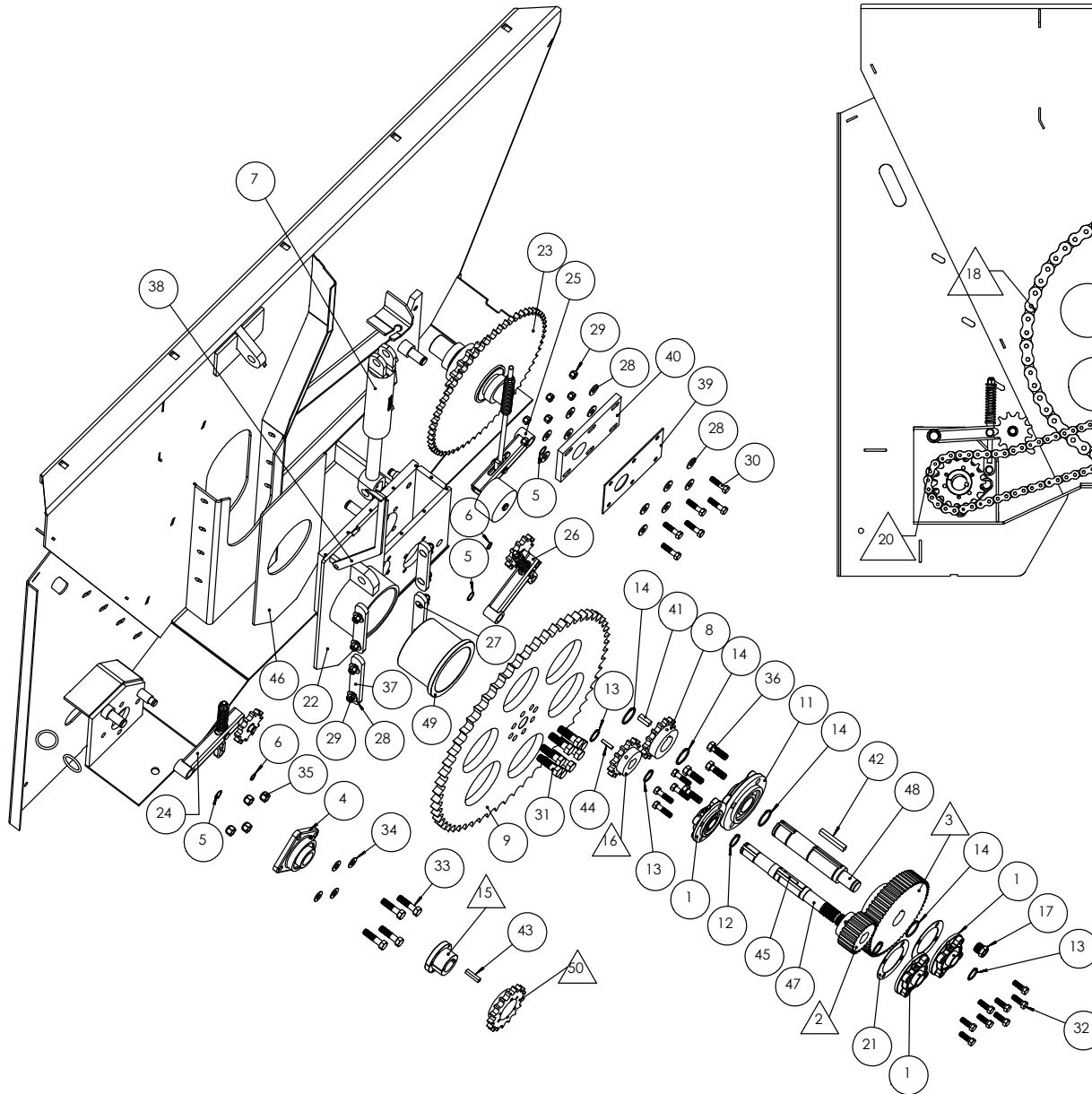
Parts List

Front Mechanics for 540/1000 RPM Spreader

No.	Part No.	Description	Qty
1	NTN UCFC207-106D1	NTN UCFC207-106D	3
2	Martin TS 624	Martin TS 624	1
3	Martin TS 660	Martin TS 660	1
4	UCF209-112D1	Flange bearing	1
5	Snap ring ext. 1 po diám	186-140	3
6	Snap ring ext. ,75 po diám	Snap-ring 3/4"	2
7	HCL2508	Hydraulic cylinder HCL2508	1
8	Martin 80BS15HT	Martin 80BS15HT	1
9	Martin 120 A 60	Sprocket 120A60	1
10	80 SK 17H	Sprocket 80 SK 17H	1
11	NTN UCFC211-200D1	NTN UCFC211-200D	1
12	185-120	Snap-ring 1 1/2"	2
13	185-119	Snap-ring 1 3/8"	3
14	185-124	Snap-ring 2"	4
15	SK 1,75	Bushing SK 1 3/4"	1
16	80BS14HT	80BS14HT	1
17	3109-12-08	Reducer male 3/4" - 14 x Female 1/2" - 14	1
18	Chaine 1 120HD	Chain 120HD	1
19	Chaine 2 80HD	Chain 80HD	1
20	Chaine 3 80HD	Chan 80HD	1
21	48-006-311	Gasket	2
22	48-006-21	Front bushing retainer	1
23	48-006-26	Complete transfer gear	1
24	48-006-30	Idler impeller	1
25	48-006-35	Idler gear screw	1
26	48-006-33	Idler gear tranfer	1
27	CRB-08-13-24-24	Carriage Bolt 1/2" - 13 UNC x 1 1/2" Long x 1 1/2" Filet	8
28	BW, 5000LA	1/2" Wide Flat Washer	20
29	BLN-08-13	Nylon nut 1/2" - 13	14
30	B-08-13-32-20	Bolt 1/2" - 13 x 2" Long x 1 1/4" Thread	10
31	B-12-10-40-28	Bolt 3/4" - 10 x 2 1/2" Long x 1 3/4" Thread	8
32	B-08-13-24-20	Bolt 1/2"-13 x 1 1/2" Long x 1 1/4" Thread	8
33	B-10-11-40-24	Bolt 5/8"-11 x 2 1/2" Long x 1 1/2" Thread	4
34	BW, 6250EA	5/8" Narrow Flat Washer	4
35	BLN-10-11	Nylon nut 5/8" - 11	4
36	B-10-11-32-24	Bolt 5/8" - 11 x 2" Long x 1 1/2" Thread	4
37	48-006-037	Hatch retainer, (Screw opening)	4
38	48-006-030	Height rod screw	1
39	48-006-191	Shim retaining sprocket	1
40	48-006-190	Sprocket adjustment plate	1
41	48-006-101	Square key 1/2" x 1 1/2" long	1
42	48-006-102	Square key 1/2" x 3 1/2" long	1
43	48-006-104	Square key 3/8" x 1 7/8" long	1
44	48-006-100	Square key 5/16" x 1 7/16" long	1
45	48-006-103	Square key 5/16" x 2 3/4" long	1
46	48-006-035	Bushing support sheet screw	1
47	48-006-318	Main shaft 1 1/2" - 21 Spline	1
48	48-006-197	Shaft 2" (Gear Box)	1
49	48-006-129	Anti-friction pad	1

Parts List

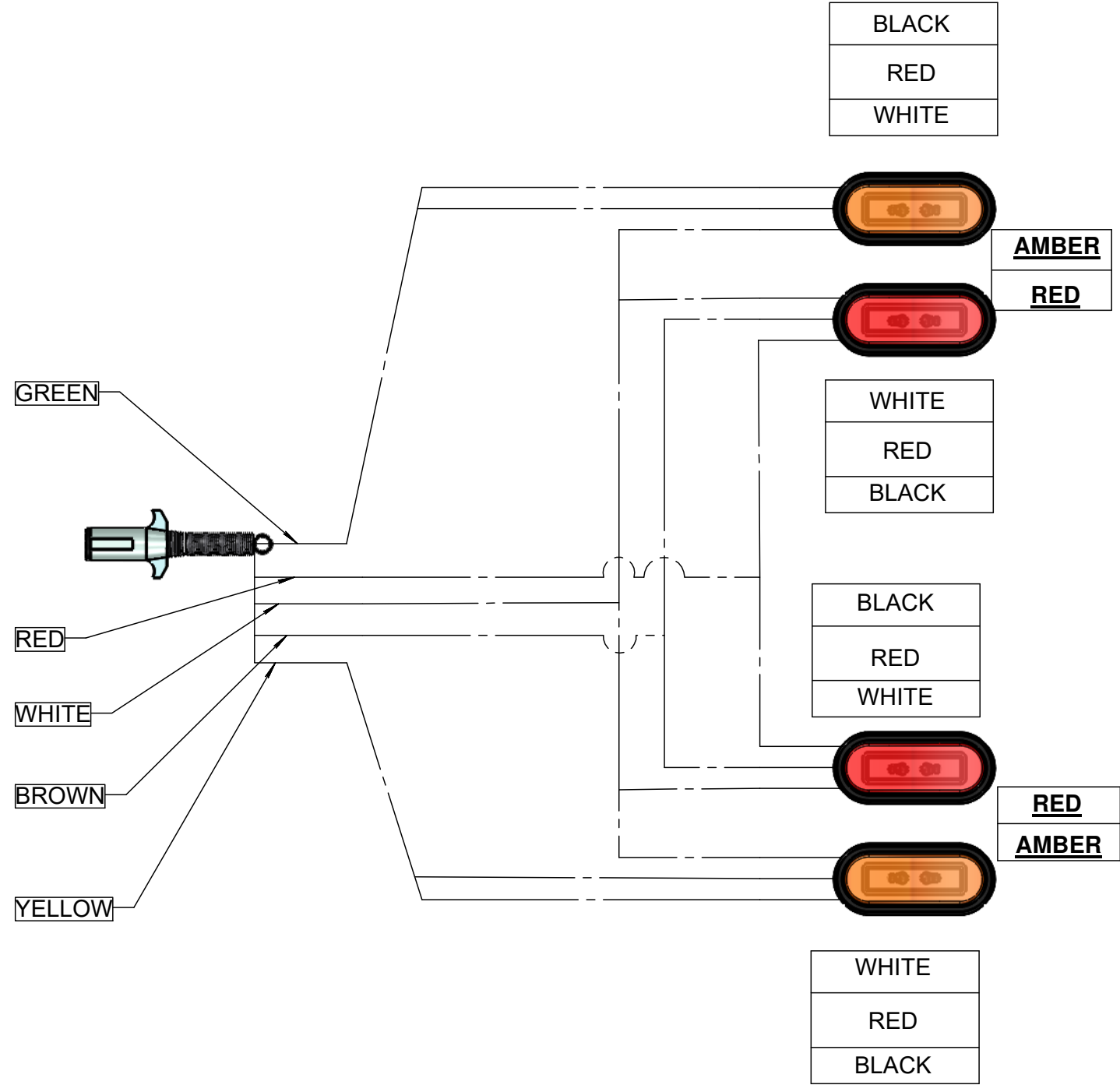
Front Mechanics for 540/1000 RPM Spreader



540/1000 rpm mechanics		
No.	540 rpm	1000 rpm
2	TS 636	TS 624
3	TS 636	TS 660
10	80 SDS 13	80 SK 18H
15	SDS 1.75	SK 1.75
16	80 BS 20HT	80BS 14HT
18	Chain 120HD 81 Rollers	Chain 120HD 81 Rollers
19	Chain 80HD 81 Rollers	Chain 80HD 82 Rollers
20	Chain 80HD 87 Rollers	Chain 80HD 76 Rollers

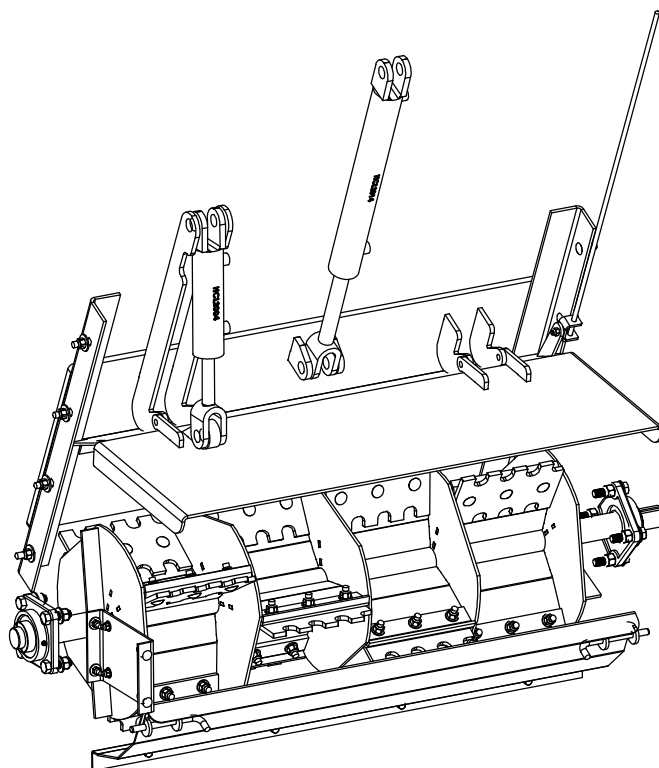
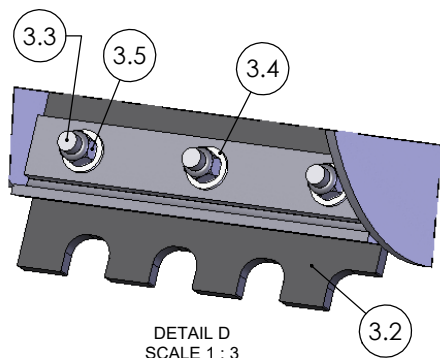
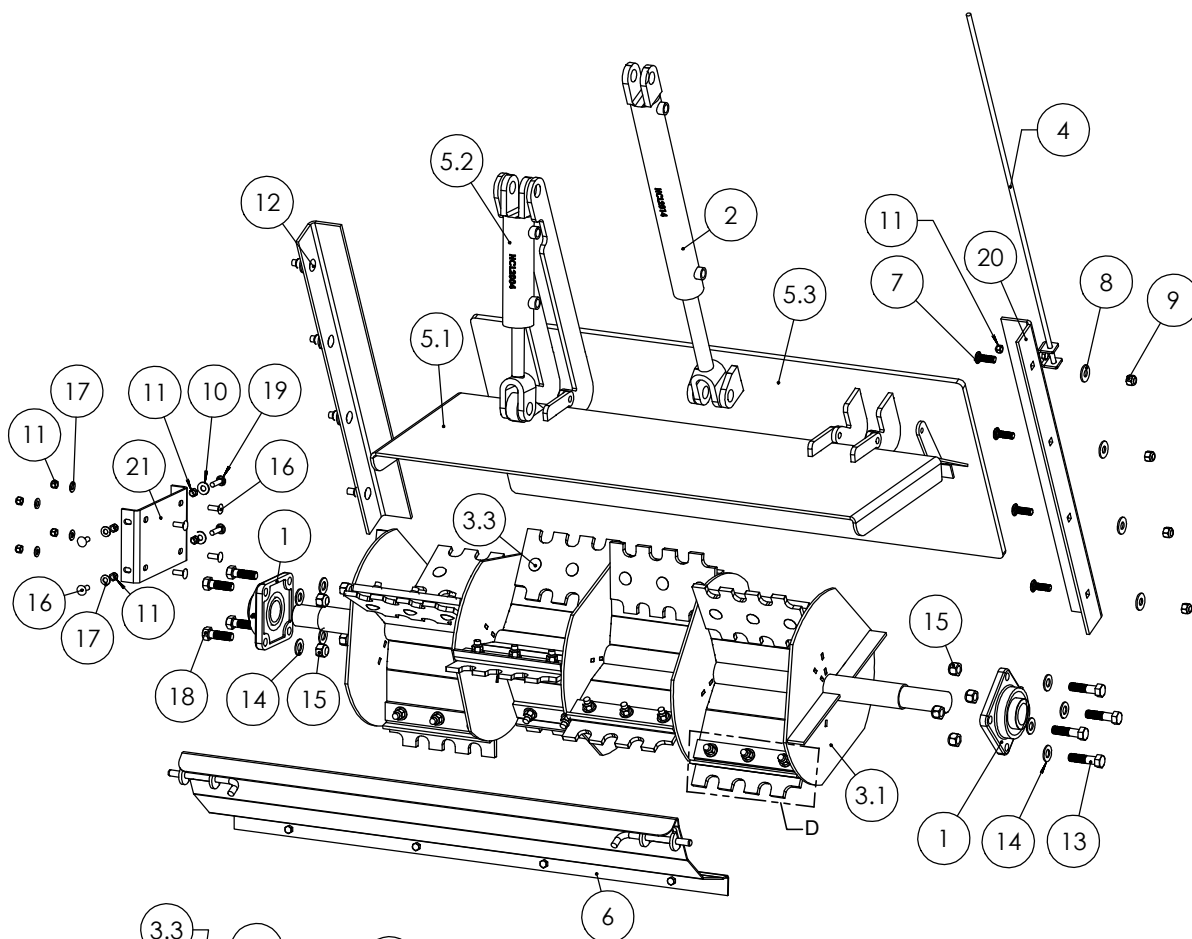
Lighting system

Manure Spreader



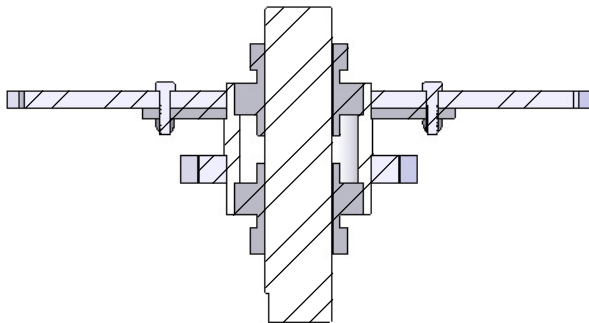
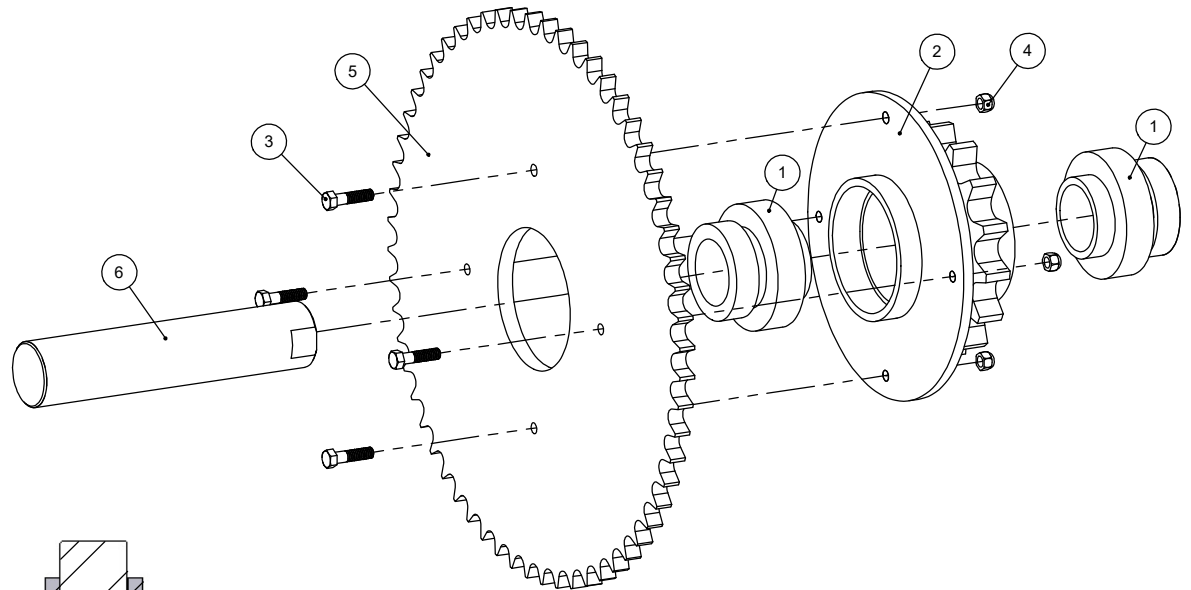
Parts List Impeller 2500 & 3300 gallons

No.	Part No.	Description	Qty
1	UCF209-112D1	Flange bearing	2
2	HCL2014	Hydraulic cylinder	1
3	48-006-39	Impeller assembled	1
3.1	48-006-11	Unloader	1
3.2	48-006-072	Replaceable blower fingers	12
3.3	CRB-08-13-32-20	Carriage Bolt 1/2"-13 UNC x 2" Long x 1 1/4" fliet	36
3.4	BW,5000EA	1/2" Narrow Flat Washer	36
3.5	BLN-08-13	Nylon nut 1/2"-13	36
4	48-006-44	Dimmer rod assembly	1
5	48-006-22	Blower side door	1
5.1	48-000-01	Impeller pallet assembly	1
5.2	HCL2004	Hydraulic cylinder	1
5.3	48-006-13	Impeller bottom hatch	1
6	48-001-23	Removable blower panel	1
7	CRB-08-13-24-24	Carriage Bolt 1/2"-13 UNC x 1 1/2" Long x 1 1/2" fliet	4
8	BW,5000LA	1/2" Wide Flat Washer	8
9	BLN-08-13	Nylon nut 1/2"-13	8
10	BW,3750LA	3/8" Wide Flat Washer	2
11	BLN-06-16	Nylon nut 3/8"-16	9
12	CRB-08-13-28-24	Carriage Bolt 1/2"-13 UNC x 1 3/4" Long x 1 1/2" fliet	4
13	B-10-11-40-24	Bolt 5/8"-11 x 2 1/2" Long x 1 1/2" Thread	4
14	BW,6250EA	5/8" Narrow Flat Washer	8
15	BLN-10-11	Nylon nut 5/8"-11	8
16	CRB-06-16-16	Carriage Bolt 3/8"-16 UNC x 1" Long x 1" de Filet	6
17	BW,3750EA	3/8" Narrow Flat Washer	6
18	B-10-11-32-24	Bolt 5/8"-11 x 2" Long x 1 1/2" Thread	4
19	CRB-06-24-24	Carriage Bolt 3/8"-16 UNC x 1 1/2" Long x 1" de Filet	2
20	48-001-167	Drain panel slide guide	2
21	48-006-228	Drain panel slide guide	1

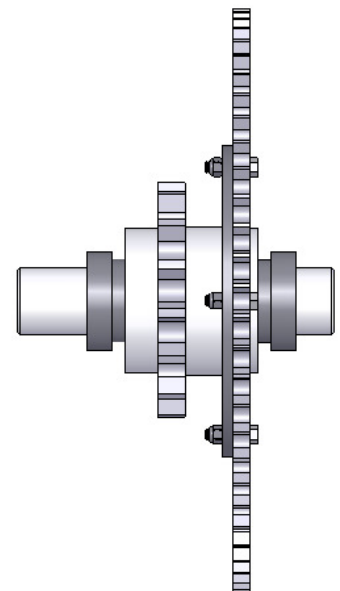
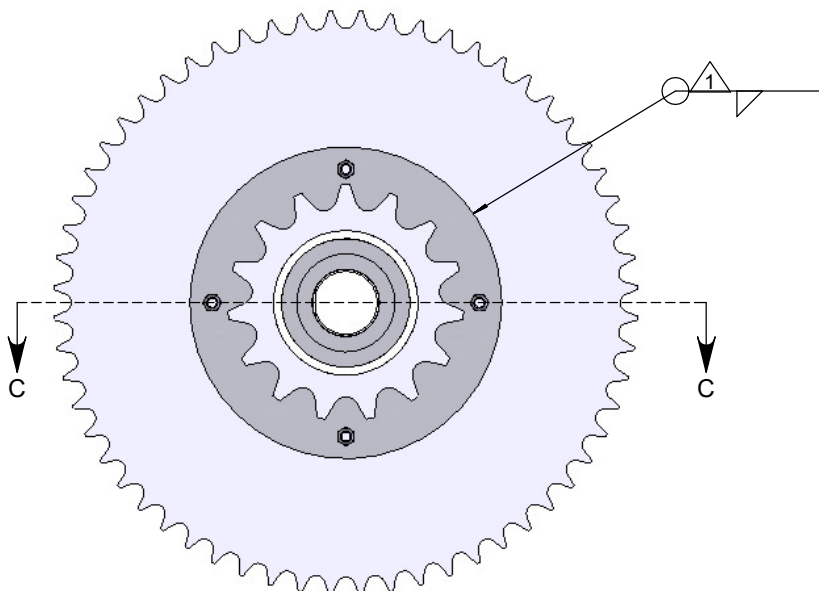


Complete transfer gear 48-006-26

No.	Part No.	Description	Qty
1	Bearing Timken G 1204KLL	Bearing Timken G 1204KLL	2
2	48-006-24	Gear transfer	1
3	B-06-16-24-16	Bolt 3/8" - 16 x 1 1/2" Length	4
4	BLN-06-16	Nylon nut 3/8" - 16	4
5	Martin 80A60	Sprocket 80A60	1
6	48-006-261	Transfer gear shaft	1

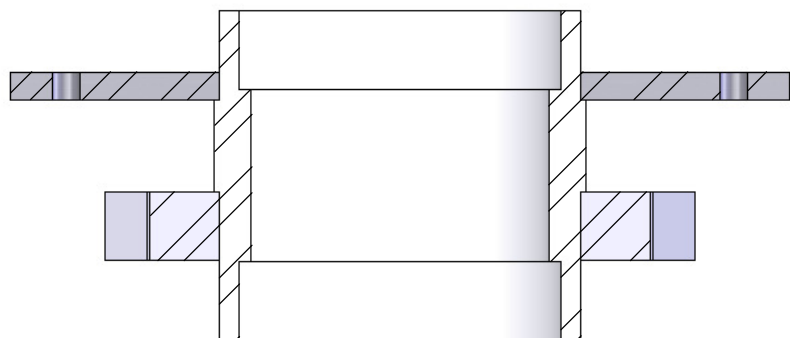
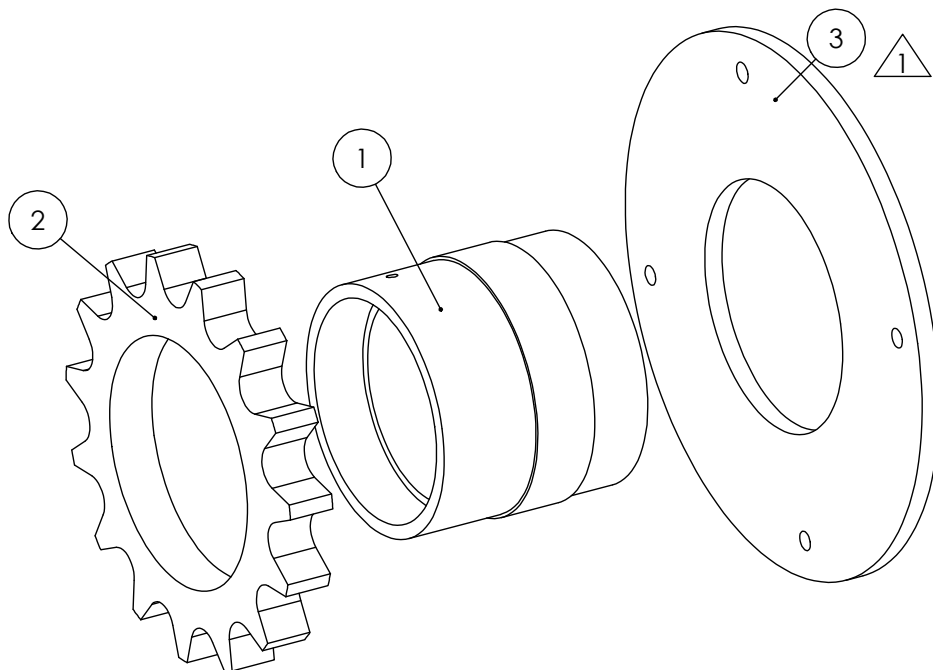


SECTION C-C
1 : 5

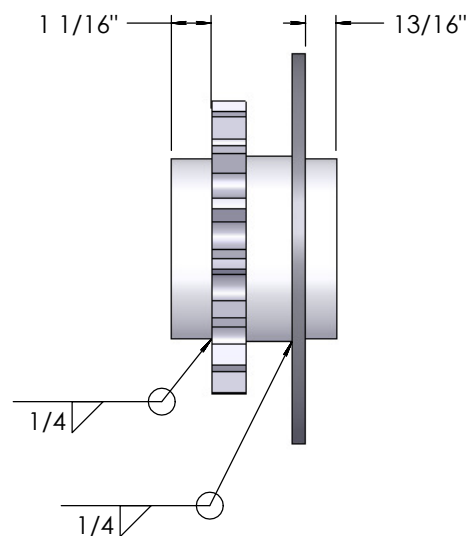
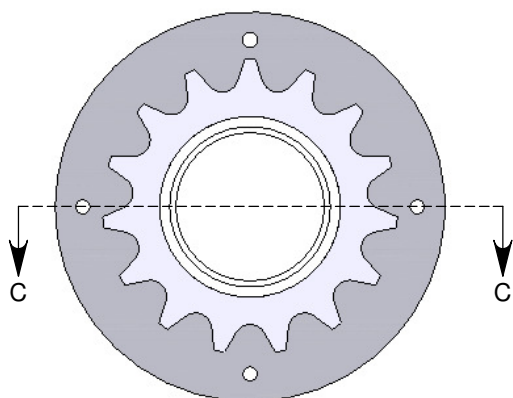


Gear transfer complete 48-006-24

No.	Part No.	Description	Qty
1	48-006-240	Tube bearing retainer	1
2	Martin 120 A 15=1	Sprocket 120A15	1
3	48-006-236	Sprocket retainer plate	1



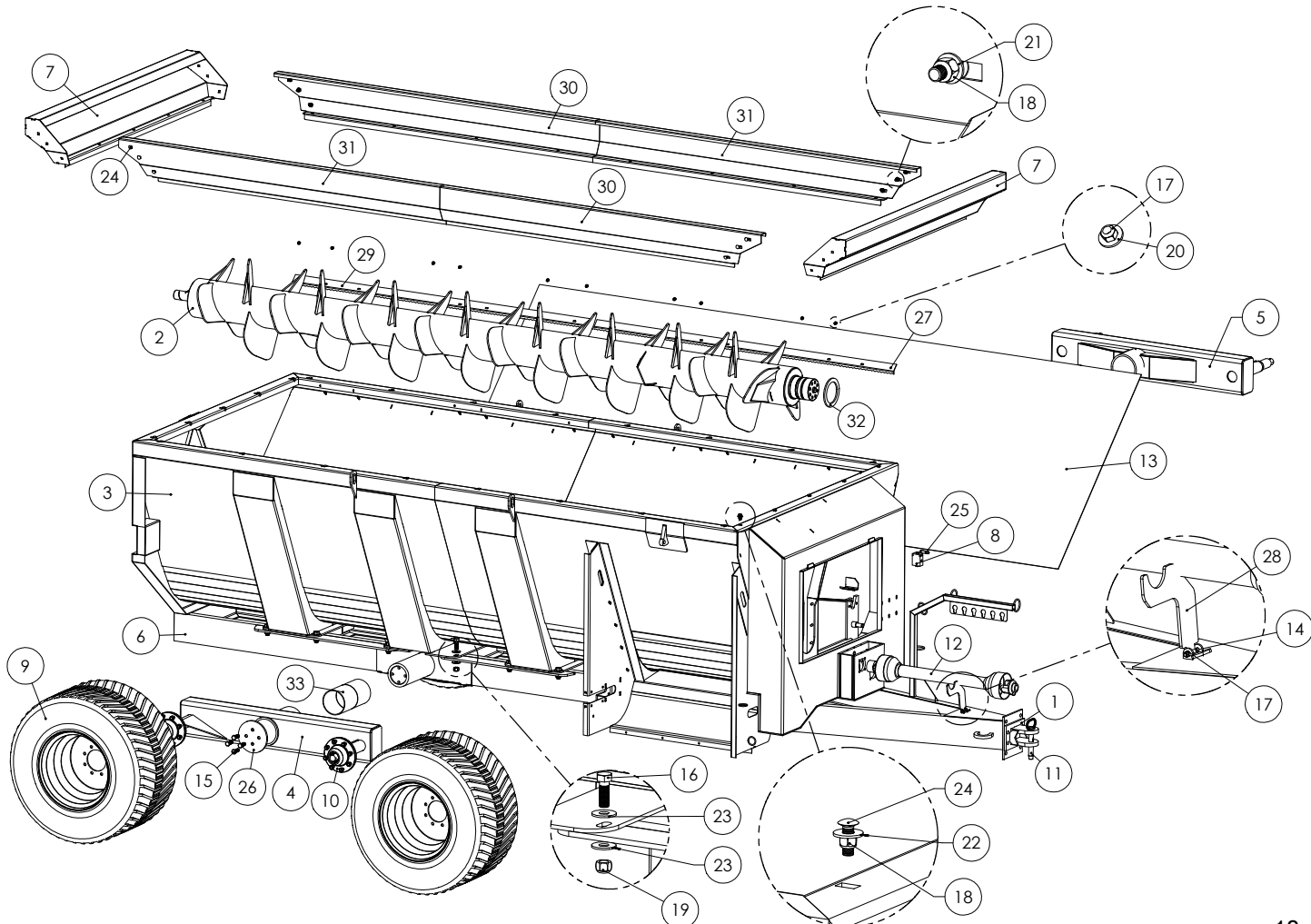
SECTION C-C
1:2



Part List

Spreader side 2500 Gal. Ass 48-006

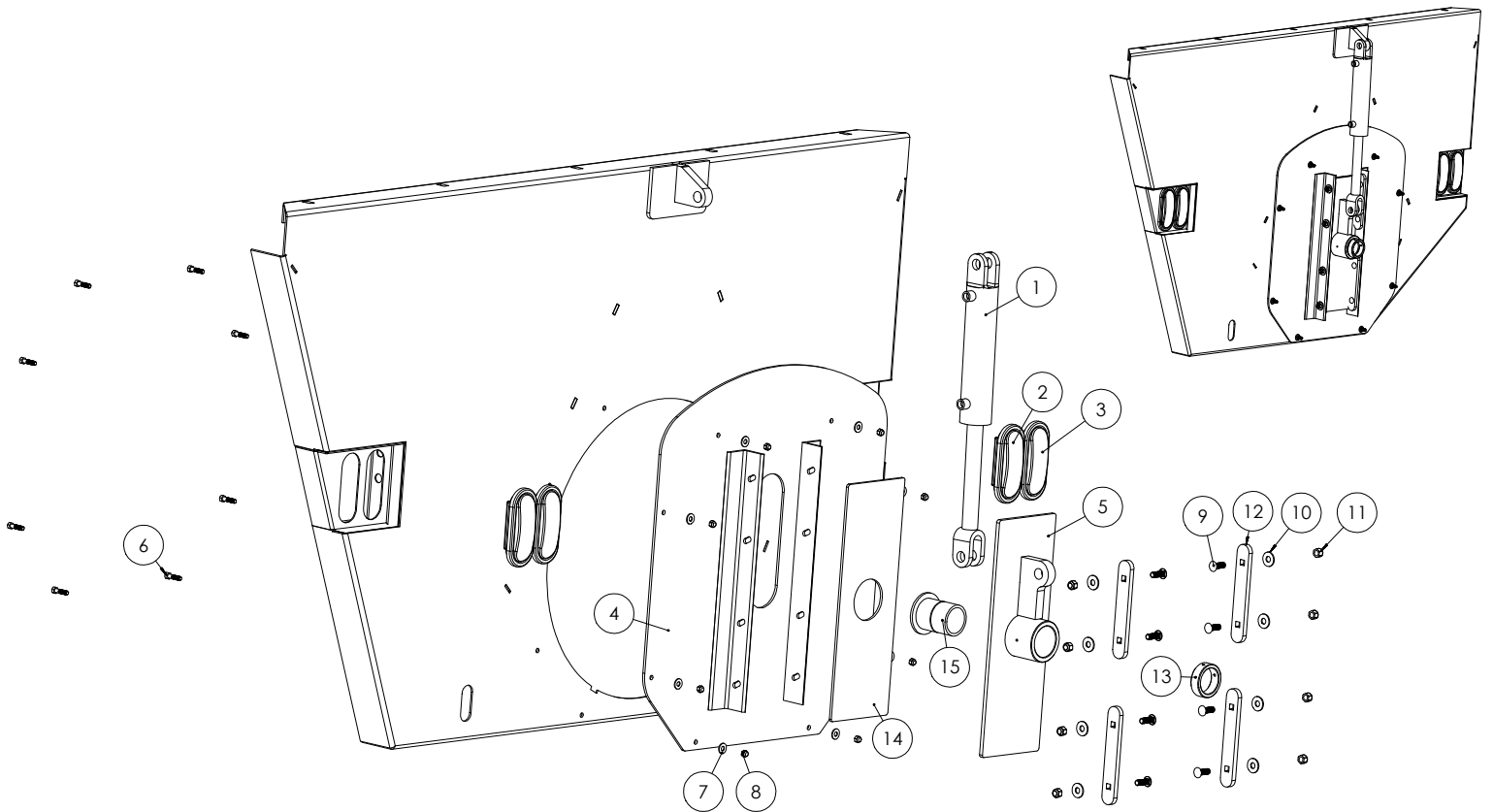
No.	Part No.	Description	Qty
1	48-002-05	Hand Drawbar spreader pin hole 1 1/4"	1
2	48-006-03	Screw assembly	1
3	48-006-04	2500 Spreader Tank	1
4	48-006-05	Assembly left thigh	1
5	48-006-06	Right side thigh	1
6	48-006-08	Frame spreader 2500	1
7	48-006-14	Front and rear extension 2500 gal	2
8	Flow divider	Flow divider	1
9	550-45-22.5-8 TROUS	550/45-22.2 flotation tire	4
10	HUB H10000	H10000 wheel hub	4
11	M1251	Hitch Pin 1 1/4" x 7"	1
12	PTO SHAF 40 po	PTO SHAF 40" + shear bolt slide collar/push pin	1
13	48-006-138	Plastic sheet	1
14	B-05-18-40-14	Bolt 5/16"-18 x 2 1/2" Long x 7/8" Thread	1
15	B-12-10-32-28	Bolt 3/4"-10 x 2" Long x 1 3/4" Thread	8
16	B-14-09-40-32	Bolt 7/8"-9 x 2 1/2" Long x 2" Thread	15
17	BLN-05-18	Nylon nut 5/16"-18	11
18	BLN-08-13	Nylon nut 1/2"-13	38
19	BLN-14-09	Nylon nut 7/8"-9	15
20	BW,3125LA	5/16" Wide Flat Washer	10
21	BW 5000EA	1/2" Narrow Flat Washer	26
22	BW,5000LA	1/2" Wide Flat Washer	12
23	BW,8750LA	7/8" Wide Flat Washer	30
24	CRB-08-13-24-24	Carriage Bolt 1/2"-13 UNC x 1 1/2" Long x 1 1/2" fliet	38
25	48-001-074	Plate retained divider	1
26	48-001-181	Tandem lock	2
27	48-003-066	Plastic lock	1
28	48-006-134	PTO SHAFT Support	1
29	48-007-208	Plastic lock	1
30	48-007-212	Sideboard rail	2
31	48-007-217	Sideboard sheet	2
32	48-006-328	Sprocket retaining plate	1
33	48-001-153	Anti-friction pad	4



Parts List

2500, 3300 Gallon Spreader Rear

No.	Part No.	Description	Oty
1	HCL2508	HCL2508 hydraulic cylinder	1
2	LUMIÈRE 6.5 OVALE ROUGE	KT3260R (RED)	2
3	LUMIÈRE 6.5 OVALE JAUNE	KT3260A (YELLOW)	2
4	48-006-07	Rear sliding panel	1
5	48-006-10	Rear bushing retainer	1
6	B-06-16-24-16	Bolt 3/8"-16 x 1 1/2" Long x 1" Thread	8
7	BW,3750LA	3/8" Wide Flat Washer	8
8	BLN-06-16	Nylon nut 3/8"-16	8
9	CRB-08-13-24-24	Carriage Boit 1/2"-13 UNC x 1 1/2" Long x 1 1/2" fliet	8
10	BW,5000LA	Flat Washer 1/2" Wide	8
11	BLN-08-13	Nylon nut 1/2"-13	8
12	48-006-037	Hatch retainer (screw opening)	4
13	48-006-316	Auger lock	1
14	48-006-038	Slider for screws	1
15	48-001-038	Rear pad screw	1



Hydraulic diagram of the hatch Spreader 2500-3300

No. Article	Part No.	Description	Qty
1	103330	Female NPT 3/8"-18 x Female NPT 3/8"-18	2
2	102600 (102720)	Male 3/8"-J IC x Male 3/8"-NPT (can also Oring)	4
3	102720	3/8" Male - JIC x 1/2" Male - ORB	3
4	100900	5405 Series - 90° Elbow - Male JIC 37° - Male NPT - 9/16" x 3/8"	2
5	103700	NPTF Tee - FPS 3/8 x FPS 3/8 x FP 3/8	1
6	109010	Quick Coupling Male x FEM 1/2"-NPT	2
7	121500	Flow Divider for Spreader 6-12 gpm + GS BODY 10-4 SEA8	1
8	120281	HCL2508 hydraulic cylinder	2
9	M03400-06	End Ring 3/8" Dia.	16
10	140030-035-101750-101820	3/8 hydraulic hose	1
11	140030-036-101750-101820	3/8 hydraulic hose	1
12	140030-051-101750-101820	3/8 hydraulic hose	1
13	140030-013-100610-101820	3/8 hydraulic hose	1
14	140030-195-100610-101740	3/8 hydraulic hose	1
15	140030-274-100610-101820	3/8 hydraulic hose	1
16	140030-241-101750-100001	3/8 hydraulic hose	1
17	140030-158-101750-101740	3/8 hydraulic hose	1

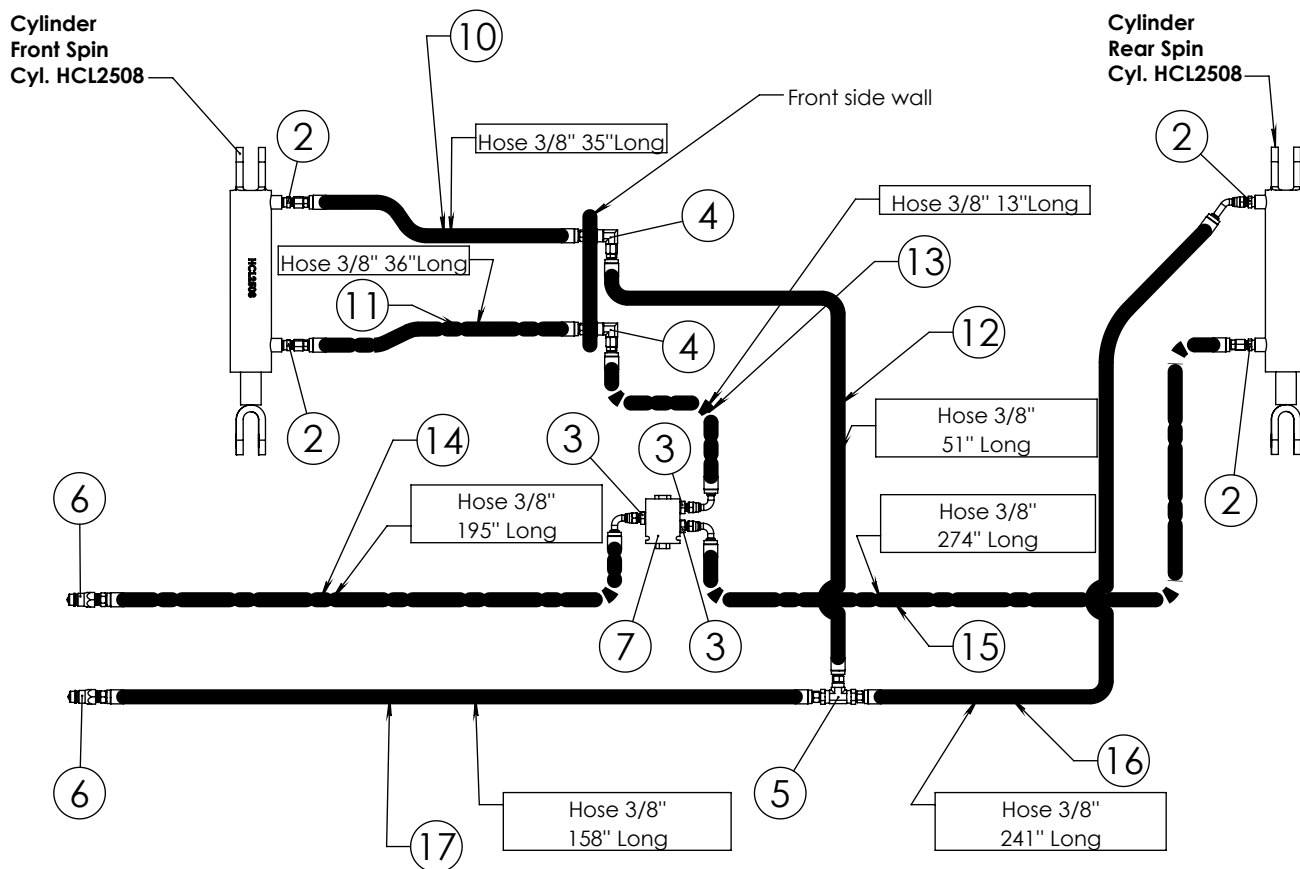


Schéma hydraulique trappe Épandeur 2500-3300

No.	Part No.	Nom	Qty
1	120151	Cylindre hydraulique HCL2014	1
2	120101	Cylindre hydraulique HCL2004	1
3	102600	Mâle 3/8"-J IC x Mâle 3/8"-NPT	4
4	109010	Quick Coupling Mâle x FEM 1/2"-NPT	4
5	140030-250-101740-100610	Hose hydraulique 3/8	1
6	140030-243-101740-101820	Hose hydraulique 3/8	1
7	140030-254-101740-101820	Hose hydraulique 3/8	2

