

**Woody Log Loader
Operator's Manual
Models
90 HD - 95 HD - 105 HD**

Woody Equipment Inc., 205 rue Commercial, Saint-Odilon-de-Cranbourne, Quebec, Canada G0S3A0
T. (418) 464-2748 F. (418) 464-2746
Email: ewoody@sogetel.net / Website: www.equipementswoody.com / Facebook: Equipements Woody



Woody Equipment Inc.
Owners: Jerome and Sebastien Labbé

**205 rue Commerciale
Saint-Odilon-de-Cranbourne
Beauce-Nord, Quebec,
Canada G0S 3A0**

T. (418) 464-2748

F. (418) 464-2746

**Email: ewoody@sogetel.net
Website: www.equipementswoody.com
Facebook: Les Equipements Woody**

Woody Equipment Inc.

© All Rights Reserved: Woody Equipment Inc. of Saint-Odilon-de-Cranbourne.
No part of this manual may be reproduced in any form without the written permission of Woody Equipment Inc.



Table of Contents

Introduction.....	1
Warning.....	2
Characteristic of the loader 90 HD.....	3
Loader 90 HD part list.....	4
Characteristic of the loader 90 HD Plus.....	5
Loader 90 HD Plus part list.....	6
Characteristic of the loader 95 HD.....	7
Loader 95 HD part list.....	8
Characteristic of the loader 105 HD.....	9
Loader 105 HD part list.....	10
Charactetistic of the trailer 8-52.....	11
Characteristic of the trailer 8-58.....	12
Characteristic of the trailer 9-58.....	13
Characteristic of Small hydraulic drawbar for 8-58 et 9-58.....	14
Characteristic of Small drawbar single-cylinder dismountable for 8-58 et 9-58.....	15
Characteristic of Small drawbar single joint dismountable for 8-58 et 9-58.....	16
Characteristic of Small drawbar single joint cylinder removable for 8-58 et 9-58.....	17
Characteristic Hydraulic power unit 5.5.....	18
Characteristic Hydraulic power unit 5.5.....	19-20
Characteristic Hydraulic power unit 5.5.....	21-22
Characteristic 4000 Lb hydraulic winch parts list.....	23
Characteristic 4000 Lb hydraulic winch parts list.....	24-25
Characteristic 6000 Lb hydraulic winch parts list.....	26
Characteristic Hidraulic hose.....	27
Characteristic 24" Dipper Dredger for 36" Grapple.....	28
Characteristic grapple 28".....	29
Characteristic gravel bin.....	30-31
Operation.....	32
Safety Instructions.....	33-41
Guarantee.....	42-43



Introduction

Congratulations on your purchase of a Woody Log Loader. Woody Equipment designs and manufactures equipment according to very strict criteria. This equipment is intended for professional use in the agricultural and forestry sectors.

Even if you have experience with this type of product, we recommend that you read these instructions carefully. These instructions contain important information on safety and efficiency and to ensure the validity of the factory guarantee.

Woody Equipment reserves the right to modify and / or improve its equipment and maintenance instructions, as well as to revise data without notice.

Write down the serial number, model number, purchased date, dealer name, and sales representative's name. Keep this information available for ordering parts as well as for any technical assistance or warranty issue.

Serial number	
Model	
Purchased date	
Dealer	
Sales representative	



Warning

The following symbols used in this manual are to warn the operator of the dangers connected to the use of this machinery. Follow the safety instructions to avoid any risk of serious injury or death.

	AVERTISSEMENT
	CHUTE DE LA CHARGE OU DES MÂTS Peut causer de graves blessures ou la mort. Ne jamais déplacer la charge ou les mâts au-dessus du personnel.
	WARNING
	FALLING BOOM OR LOAD Can cause severe injuries or death. Do not move boom or load over people.
<small>ALFACOLLER 11268 791 30 006 20</small>	

	AVERTISSEMENT
	RISQUE D'ÉCRASSEMENT Les stabilisateurs peuvent causer de graves blessures ou la mort. Gardez le personnel éloigné des stabilisateurs.
	WARNING
	CRUSHING HAZARD Stabilizers can cause severe injuries or death. Keep bystanders away from stabilizer zone.
<small>ALFACOLLER 11268 791 30 006 20</small>	

	AVERTISSEMENT
	MACHINE INSTABLE Toujours opérer la chargeuse avec les stabilisateurs abaissés sur un sol ferme et au niveau. Assurez- vous d'avoir une stabilité adéquate.
	WARNING
	UNSTABLE MACHINE Do not operate loader without lowering the stabilizers on firm level ground and checking for adequate stability.
<small>ALFACOLLER 11268 791 30 006 20</small>	

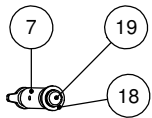
	DANGER
	ÉLOIGNEZ-VOUS STAY AWAY
<small>ALFACOLLER 11268 791 30 006 20</small>	

	AVERTISSEMENT
<p>C'est le opérateur de cette chargeuse doit être qualifié et entraîné avant d'opérer cet équipement. Observez les lois fédérales et provinciales sur les règlements de sécurité concernant les machines particulières à utiliser. Ne jamais dépasser les recommandations techniques recommandées de la chargeuse ou de l'attachement. Il est important de lire les informations sur les tableaux de sécurité. Informez les autres de la présence de l'opérateur de la chargeuse et dans les opérations techniques, sinon des blessures ou même la mort peuvent en résulter.</p>	
	WARNING
<p>Any operator of this loader must be fully trained and qualified to do so. Observe all state or provincial safety regulations relating to the particular work being performed. Never exceed recommended technical specifications of the loader or its attachments. Injury, including death may result from failure to follow this warning and/or the information contained in the loader operator's manual/technical specifications sheet.</p>	
<small>ALFACOLLER 11268 791 30 006 20</small>	

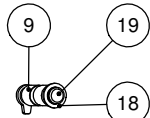
DANGER
20M ZONE AREA



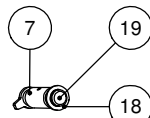
Characteristics of the loader 90-HD



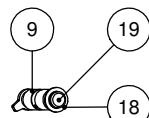
DETAIL G
SCALE 1 : 11



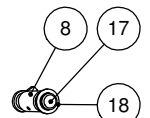
DETAIL F
SCALE 1 : 11



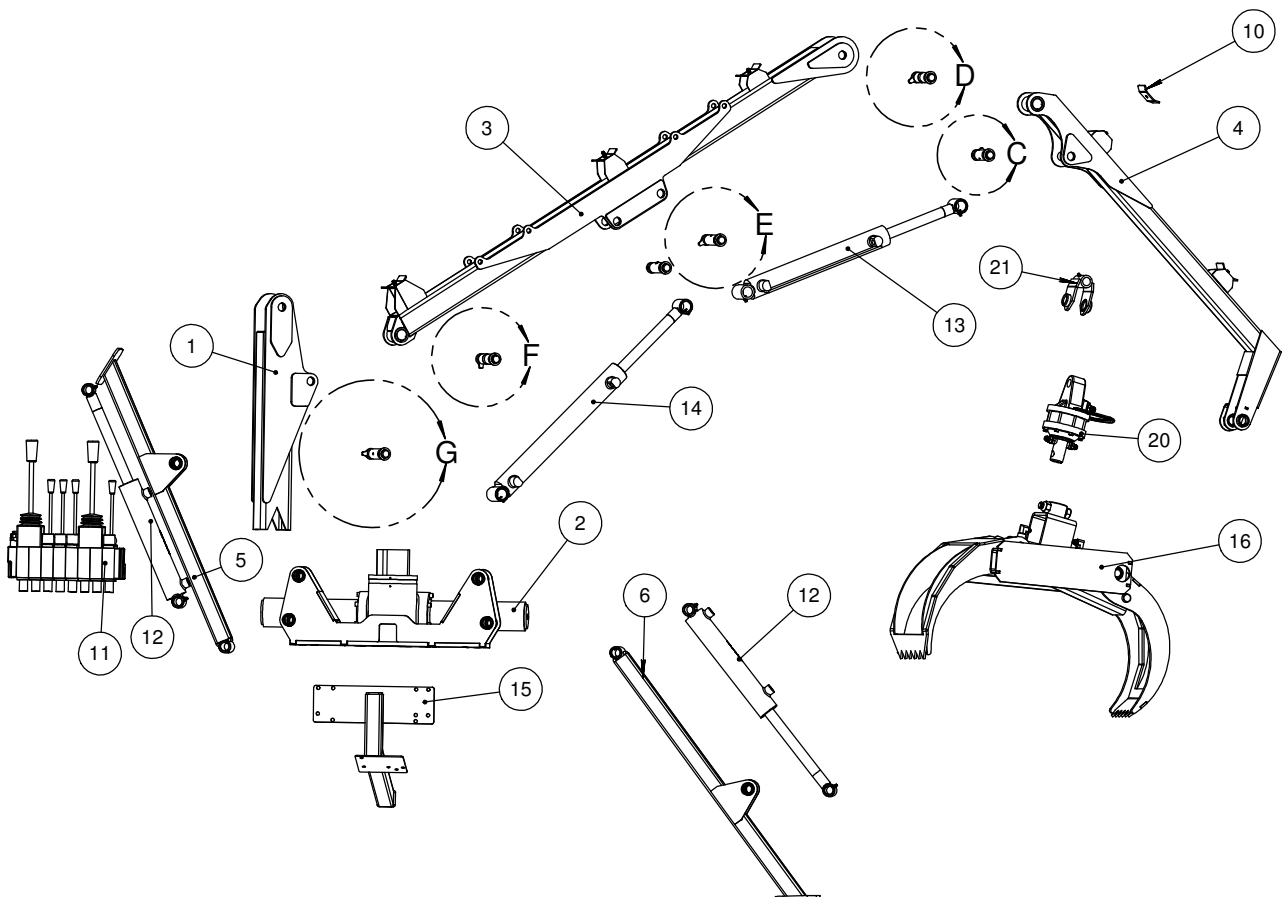
DETAIL E
SCALE 1 : 11



DETAIL D
SCALE 1 : 11



DETAIL C
SCALE 1 : 11



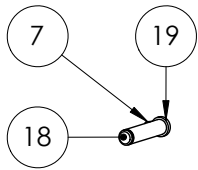


90 HD Loader Parts list

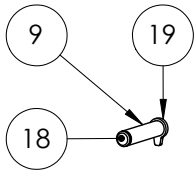
item	Parts#	Description	Qty
1	60-024-04	Loader column	1
2	60-024-08	Pinion W-CR-850	1
3	60-024-05	Loader main boom	1
4	60-024-06	Loader stick boom 90 HD	1
5	60-024-02	Left stabilizer	1
6	60-024-01	Right stabilizer	1
7	60-000-060	Hose lock	5
8	20-024-07	Main boom cylinder lock	1
9	20-024-03	Main boom cylinder lock	5
10	60-025-15	SALAMI hydraulic valve support	1
11	60-035-022	Washer	6
12	60-024-03	Grapple yoke	1
13	89-20-16-44-D22-00	Plastic tubing 1 1/4" O.D.	3
14	89-20-16-36-D18-00	Plastic tubing 1 1/4" O.D.	1
15	89-20-16-48-D24-00	Plastic tubing 1 1/4" O.D.	2
16	130260	8-section mono-block	1
17	120132	Hydraulic cylinder 2" dia. x 10" stroke	2
18	120152	Hydraulic cylinder 2" dia. x 10" stroke	1
19	120162	Hydraulic cylinder 2" dia. x 16" stroke	1
20	57-006	28" Grapple	1
21	199311	CR-100 Rotator	1



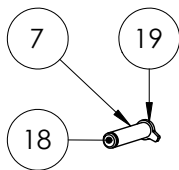
Characteristics of the loader 90-HD PLUS



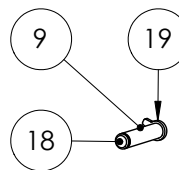
DETAIL F
SCALE 1 : 10



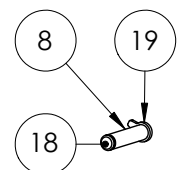
DETAIL E
SCALE 1 : 10



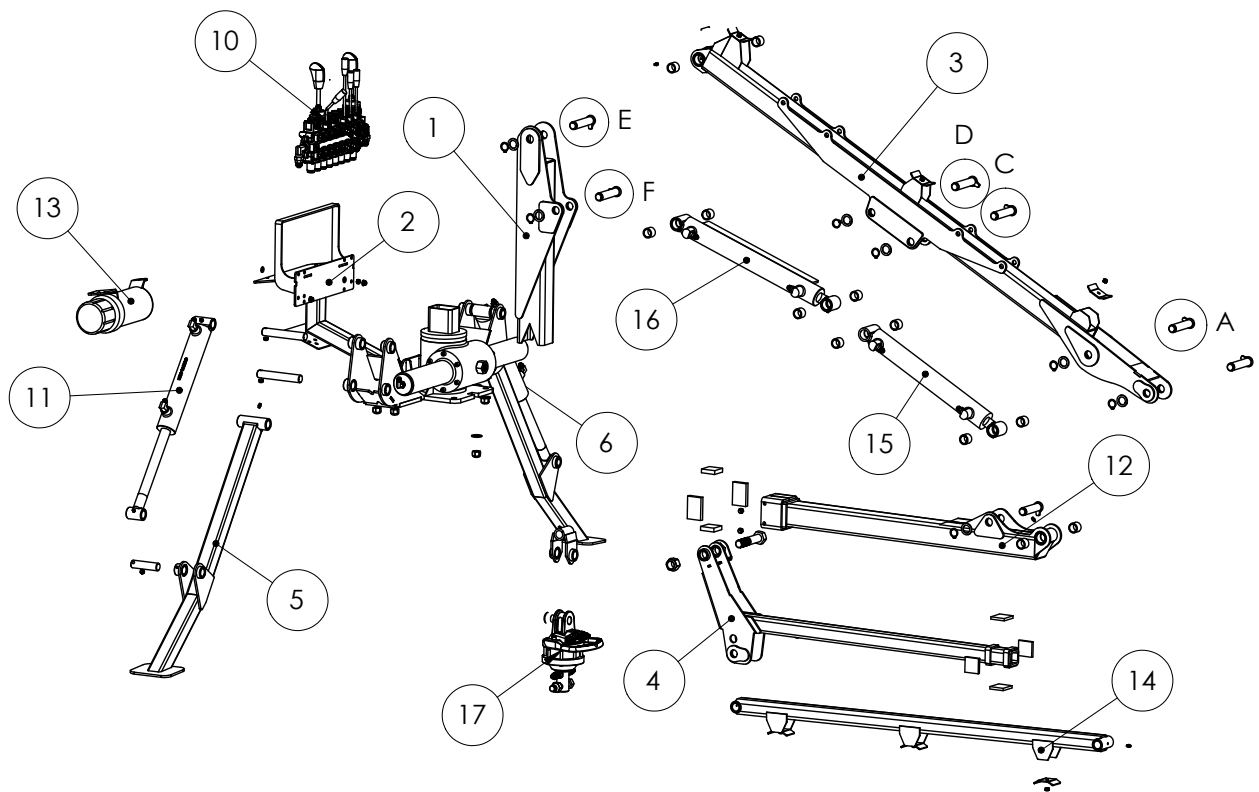
DETAIL D
SCALE 1 : 10



DETAIL C
SCALE 1 : 10



DETAIL A
SCALE 1 : 10



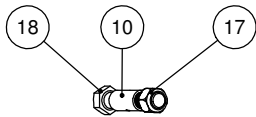


90 HD Plus Loader Part list

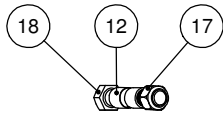
item	Parts#	Description	Qty
1	60-024-04	Loader column	1
2	60-025-15	Hydraulic valve support SALAMI	1
3	60-024-05	Large boom Loader	1
4	60-108-01	Loader stick arm 90 HD telescopic	1
5	60-110-02	Patte stabilisatrice gauche	1
6	60-110-01	Right stabilizer leg	1
7	89-20-16-44-D22-00	Plastic tube 1 1/4" O.D.	3
8	89-20-16-36-D18-00	Plastic tube 1 1/4" O.D.	1
9	89-20-16-48-D24-00	Plastic tube 1 1/4" O.D.	2
10	130260	GA Monoblock valves 8 sections Q25	5
11	120132	Hydraulic Cylinder 2" Dia. x 10" Stroke	1
12	60-108-06	Small boom Loader 90 HD telescopic	2
13	400501	Round document holder for manual 5" x 12 1/2"	1
14	130260	Rappel arm 90 HD+	5
15	120152	Hydraulic Cylinder 2" Dia. x 14" Stroke	1
16	120162	Hydarulic Cylinder 2" Dia. x 16" Stroke	2
17	199311-01	Assemblage Rotor CR-100	1
18	60-035-022	Rondelle	6
19	20-024-03	Barrure de cylindre gros boom	5



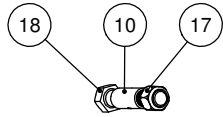
Characteristics of the loader 95-HD



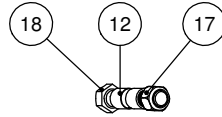
DETAIL M
SCALE 1 : 11



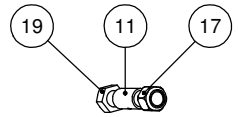
DETAIL L
SCALE 1 : 11



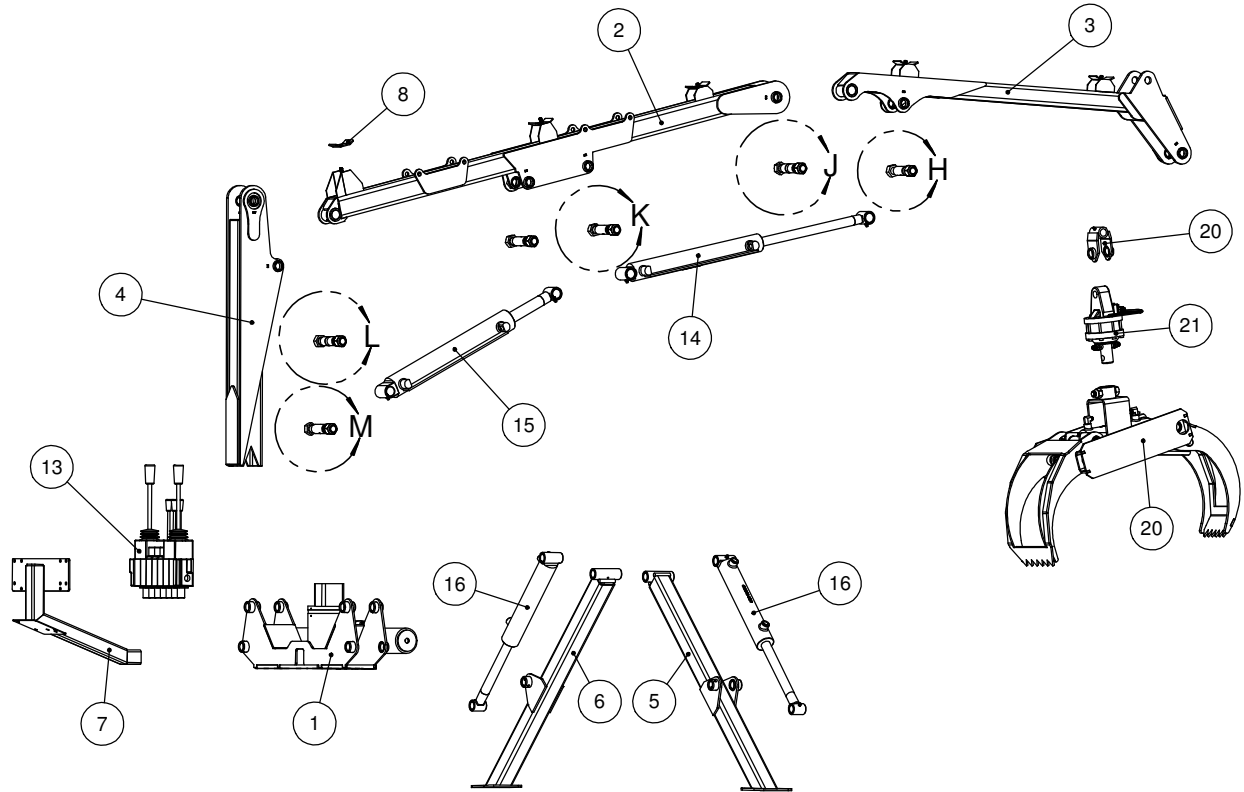
DETAIL K
SCALE 1 : 11



DETAIL J
SCALE 1 : 11



DETAIL H
SCALE 1 : 11



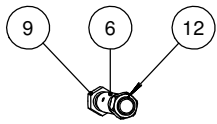


95-HD Loader Parts list

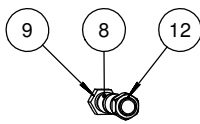
ITEM	Part #	Description	Qty
1	60-025-01	Pinion assembly	1
2	60-025-02	Loader main boom 95 HD	1
3	60-025-03	Loader stick boom 95 HD	1
4	60-025-04	Loader column 95 HD	1
5	60-025-05	Right stabilizer 95-HD	1
6	60-025-06	Left stabilizer 95-HD	1
7	60-025-15	SALAMI hydraulic valve support	1
8	60-000-060	Hose lock	5
9	60-024-03	Grapple yoke	1
10	89-20-16-44-D22-00	Plastic tubing 1 1/4" O.D.	3
11	89-20-16-36-D18-00	Plastic tubing 1 1/4" O.D.	1
12	89-20-16-48-D24-00	Plastic tubing 1 1/4" O.D.	2
13	130230	Anti-shock Q25/7 control	1
14	120162	Hydraulic cylinder 2" dia. x 16" stroke	1
15	120322	Hydraulic cylinder 2" dia. x 16 stroke	1
16	120132	Hydraulic cylinder 2" dia. x 10" stroke	2
17	301500	Nylon nut 1"-8	6
18	300340	Bolt 1"-8 x 7" Long x 2 1/2" threads	5
19	300330	Bolt 1"-8 x 6 1/2" Long x 2 1/2" threads	1
20	57-006	28" Grapple	1
21	199311	CR-100 Rotator	1



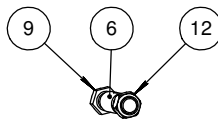
Characteristics of the loader 105-HD



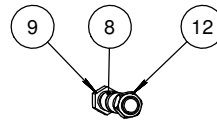
DETAIL U
SCALE 1 : 11



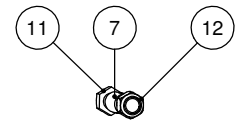
DETAIL T
SCALE 1 : 11



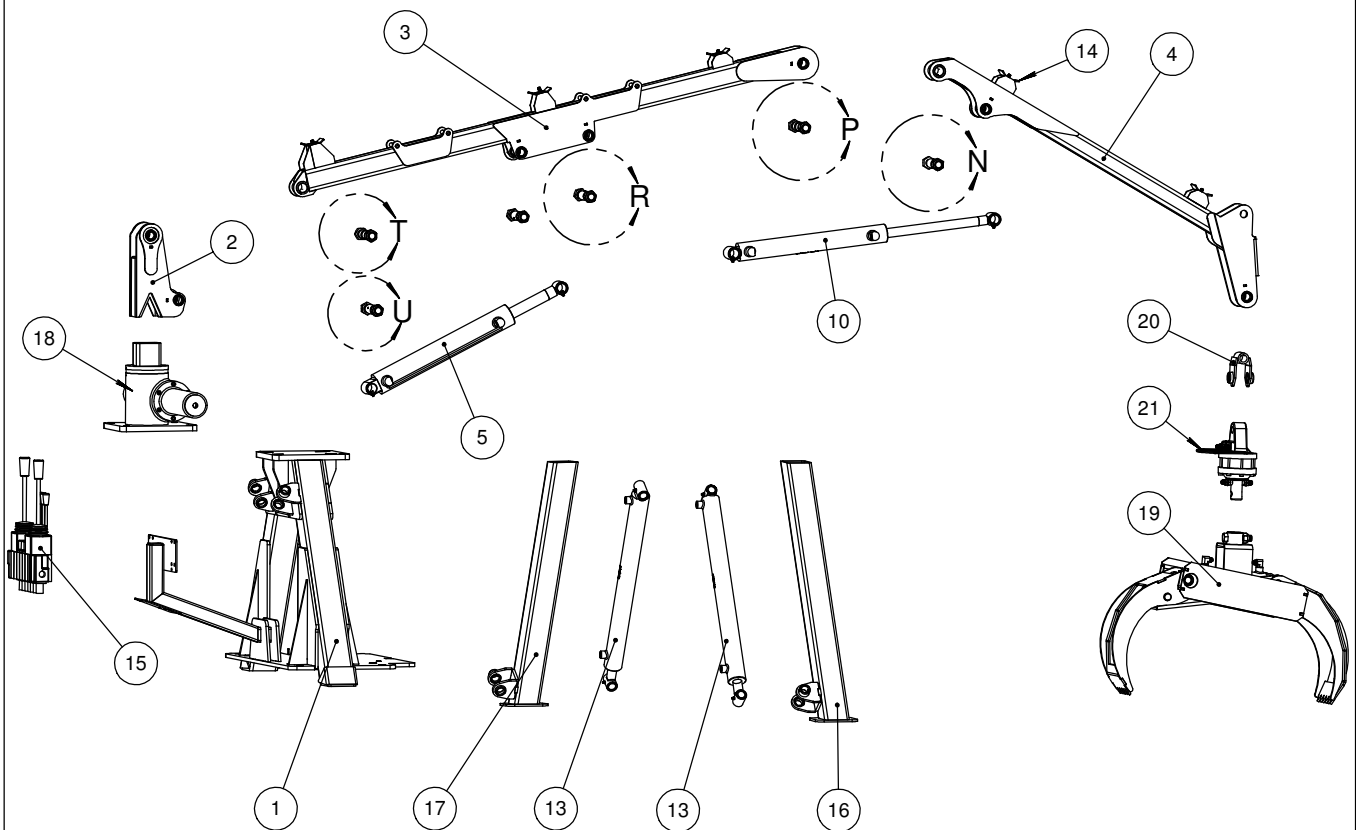
DETAIL R
SCALE 1 : 11



DETAIL P
SCALE 1 : 11



DETAIL N
SCALE 1 : 11



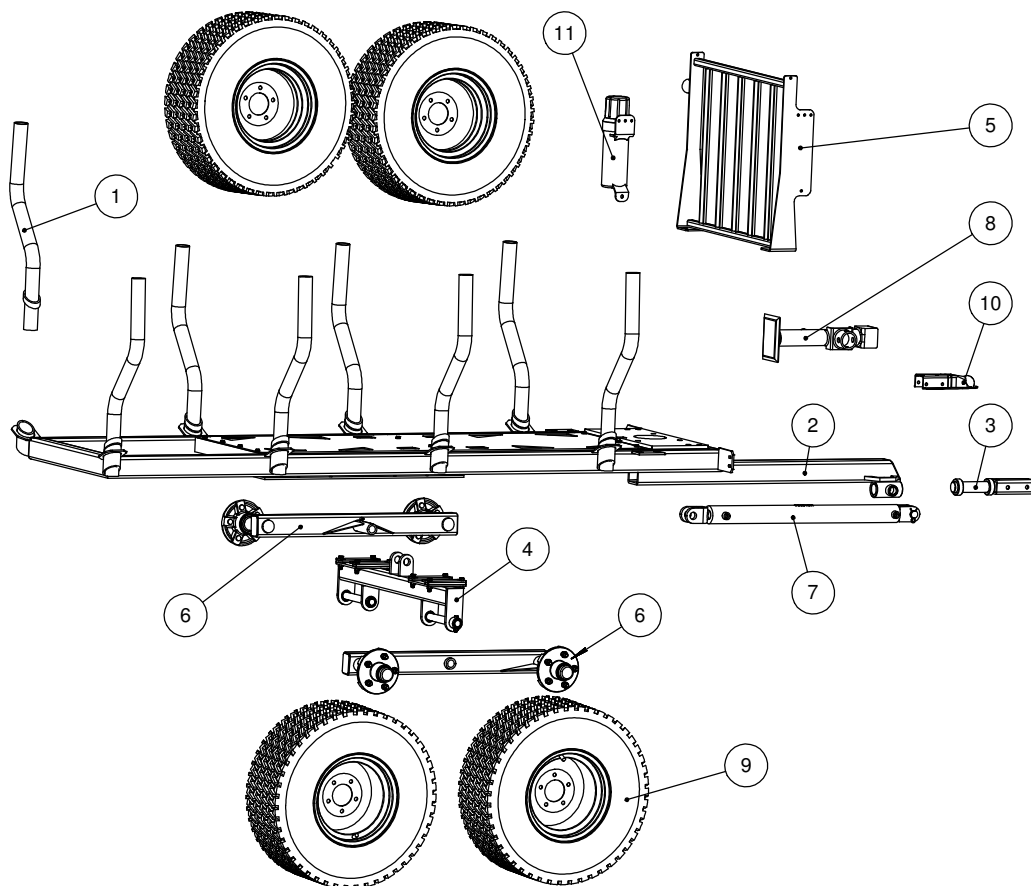


**105 HD Loader
Parts list**

Item	Part#	Description	Qty
1	60-042-01	Loader A-frame	1
2	60-042-02	Loader column	1
3	60-042-03	Main boom 105-HD	1
4	60-042-04	Stick boom 105-HD	1
5	60-042-05	Right stabilizer	1
6	60-042-06	Left stabilizer	1
7	60-024-03	Grapple yoke	1
8	60-000-060	Hose lock	5
9	89-20-16-44-D22-00	Plastic tubing 1 1/4" O.D.	3
10	89-20-16-36-D18-00	Plastic tubing 1 1/4" O.D.	1
11	89-20-16-48-D24-00	Plastic tubing 1 1/4" O.D.	2
12	300340	Bolt 1"-8 x 7" Long x 2 1/2" Threads	5
13	300330	Bolt 1"-8 x 6 1/2" Long x 2 1/2" threads	1
14	301500	Nylon nut 1"-8	6
15	120190	Hydraulic cylinder 2" x 24" stroke	2
16	120322	Hydraulic cylinder 2-1/2" x 16" stroke	1
17	120162	Hydraulic cylinder 2" Dia. x 16" stroke	1
18	130230	Ant-shock Q25/7 control	1
19	110020	Pinion assembly	1
19	57-006	28" Grapple	1
21	199311	CR-100 Rotator	1



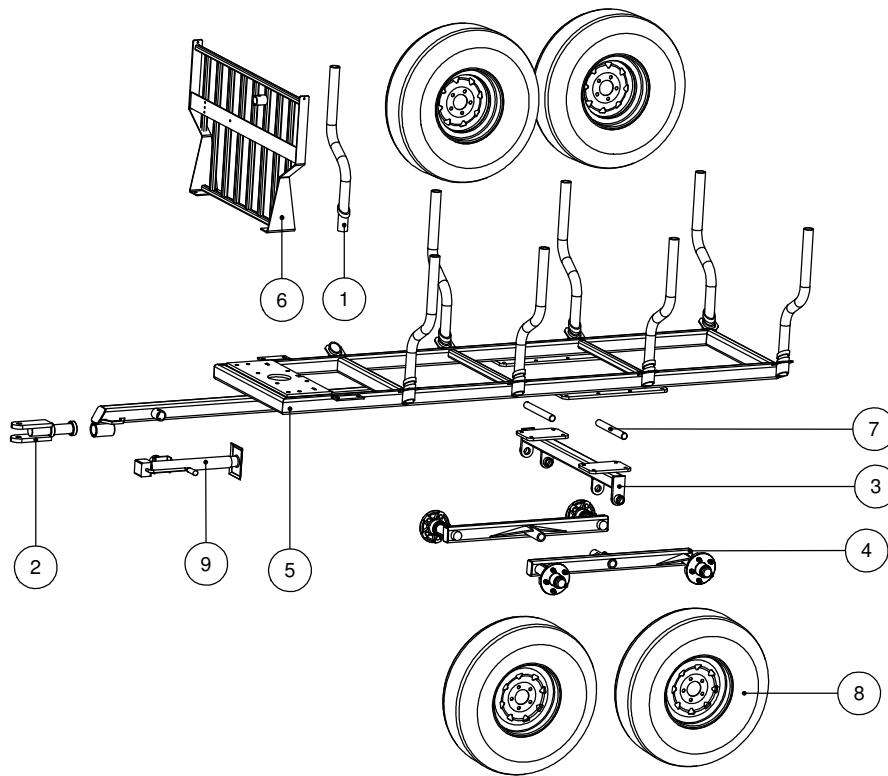
Characteristics of the trailer 8-52



Item	Part #	Description	Qty
1	59-019-09	7-52 Trailer post	8
2	59-019-07	7-52 Frame	1
3	59-019-06	Swivel pole	1
4	59-019-03	Hydraulic axle	1
5	59-019-08	Protective grid	1
6	59-019-05	7-52 Tandem	2
7	120191	Hydraulic cylinder	1
8	303010	Trailer Jack-3000 or 2000lbs	1
9	302210	25-10-12 Tire 6 ply 5 nuts	4
10	310670	Hitch	1
11	400500	Document holder	1



Characteristic of the trailer 8-58

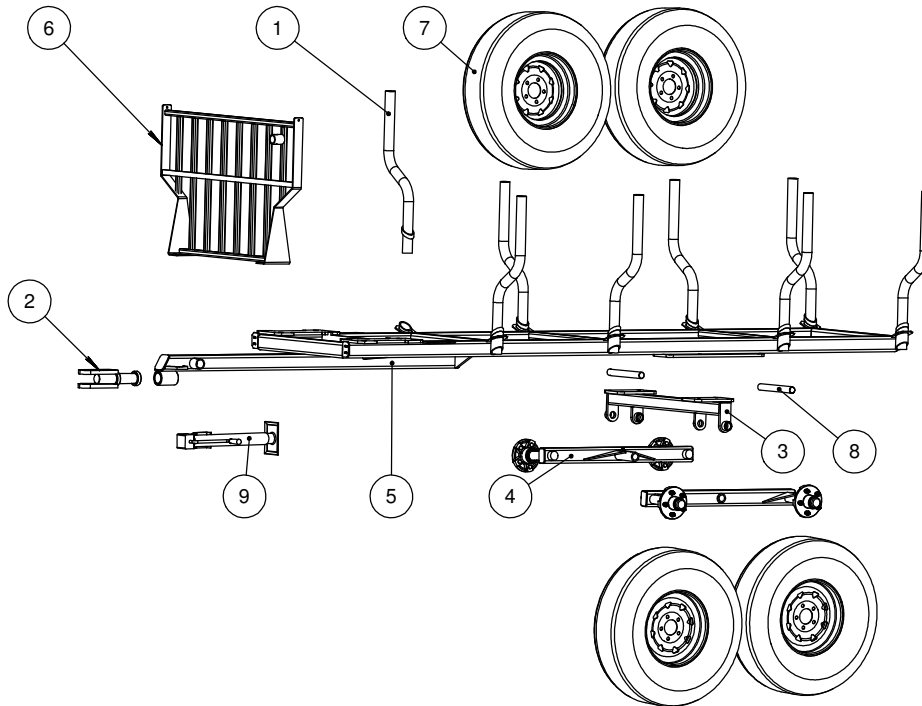


8-58 Trailer with 11L15 Tires Parts list

Item	Part#	Description	Qty
1	59-020-07	8-58 Trailer post	8
2	59-020-05	Hitch	1
3	59-006-04	8-58 tandem trailer hub 3500lb	1
4	59-020-08	Tandem trailer hub 3500 lb	2
5	59-020-01	8-58 Forestry trailer frame	1
6	59-020-06	8-58 Protective grid	1
7	86-20-173-E08-00	Rod 1 1/4" O.D.	2
8	302000	11L15 tire 8 ply 5 Nuts 3500lb	4
9	303020	Trailer Jack -6000 ou 5000 lb	1

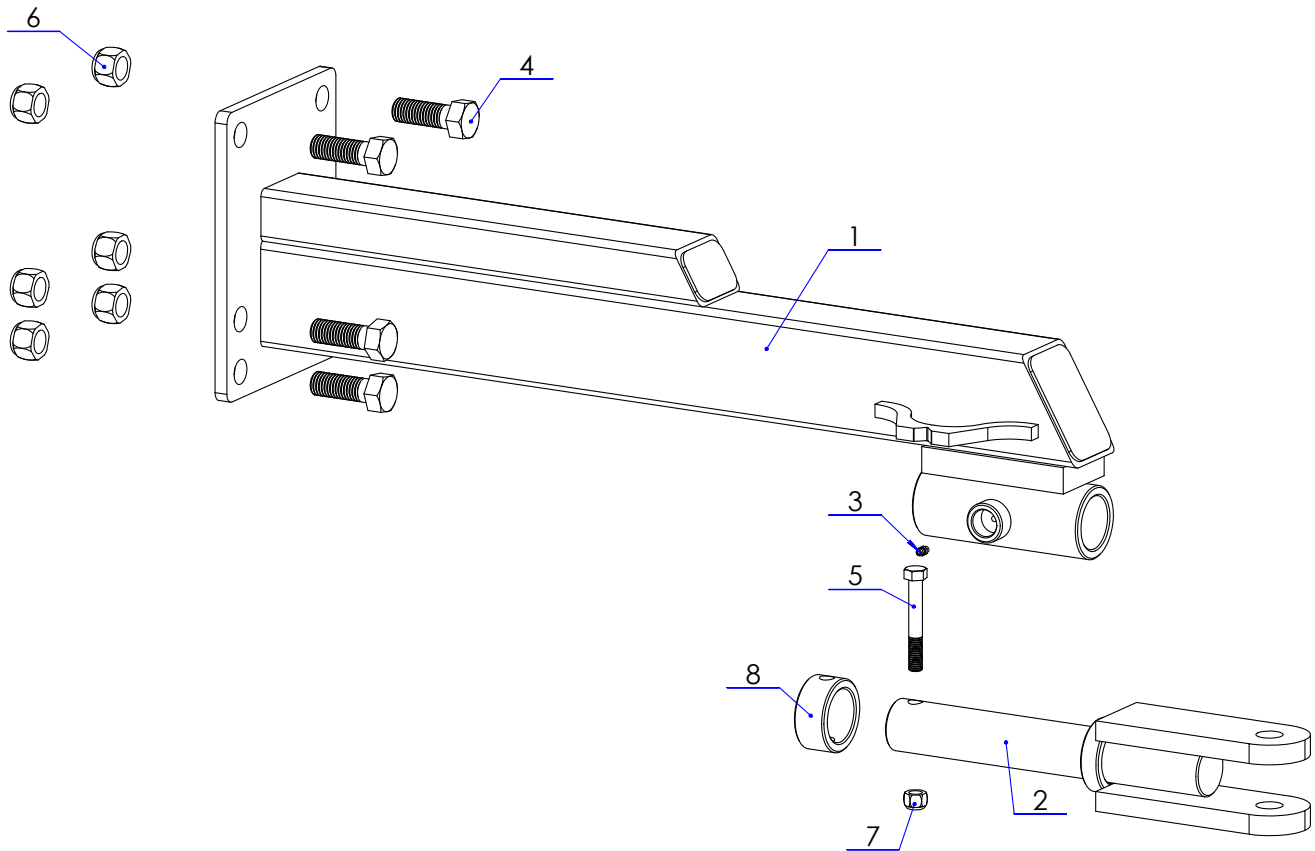


Characteristic of the trailer 9-58



9-58 Forestry trailer with 11L15 tires parts list

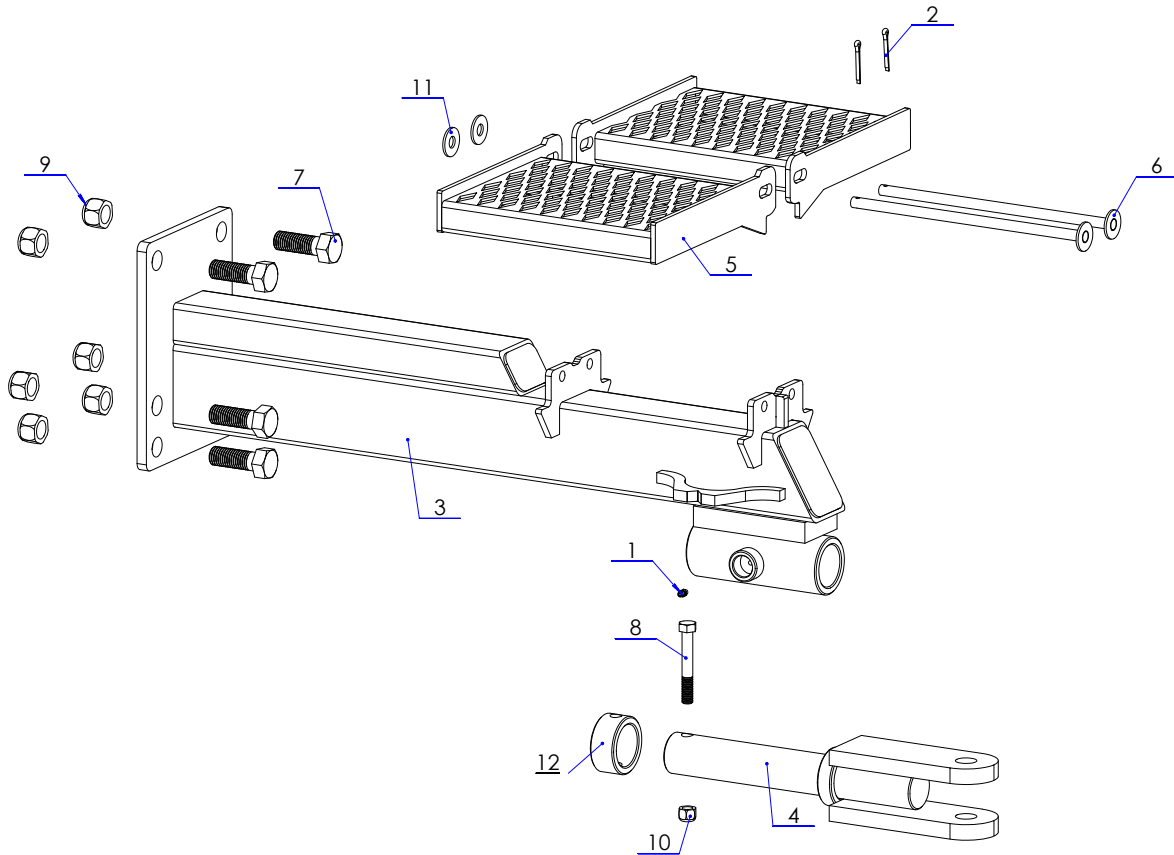
Item	Part #	Description	Qty
1	59-020-07	8-58 Trailer post	8
2	59-020-05	Hitch	1
3	59-128-04	Bolted adjustable axle	1
4	59-020-08	Tandem trailer hub 3500 lb	2
5	59-128-01	9-58 Forestry trailer frame	1
6	59-128-02	9-58 Protective grid	1
7	302000	11L15 Tire 8 ply 5 Nuts 3500lb	4
8	86-20-173-E08-00	Rod 1 1/4" O.D.	2
9	303020	Trailer jack 6000 or 5000 lb	1



Part list

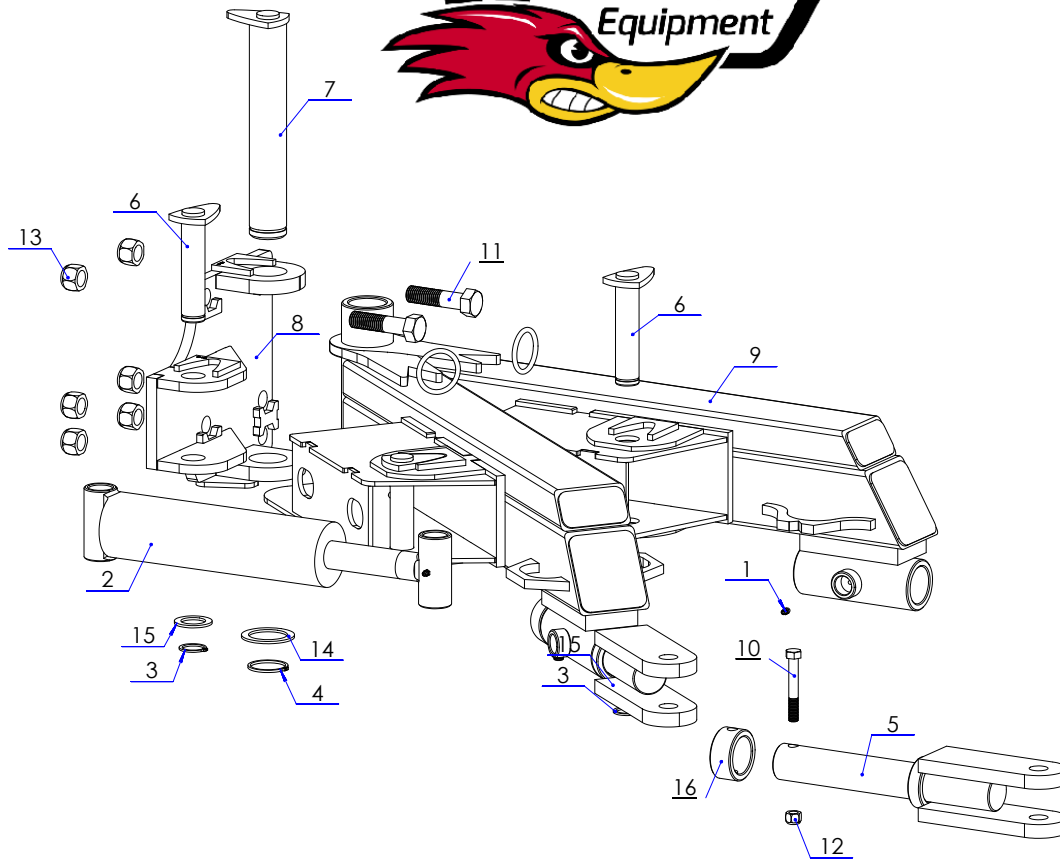
Small hydraulic drawbar (8-58, 9-58)

No.	Part No.	Description	Qty
1	59-076-63	Small pole removable without foot step	1
2	59-020-05	Agricultural trailer coupling	1
3	310020	Grease nipple right 1/4"-28	1
4	301010	Bolt 7/8"-9 x 2 1/2" Length	6
5	300060	Bolt 1/2"-13 x 3 1/2" Length	1
6	301590	Nylon nut 7/8"-9	6
7	301510	Nylon nut 1/2"-13	1
8	59-076-105	Pole Bar Lock (shaft 1 15/16")	1



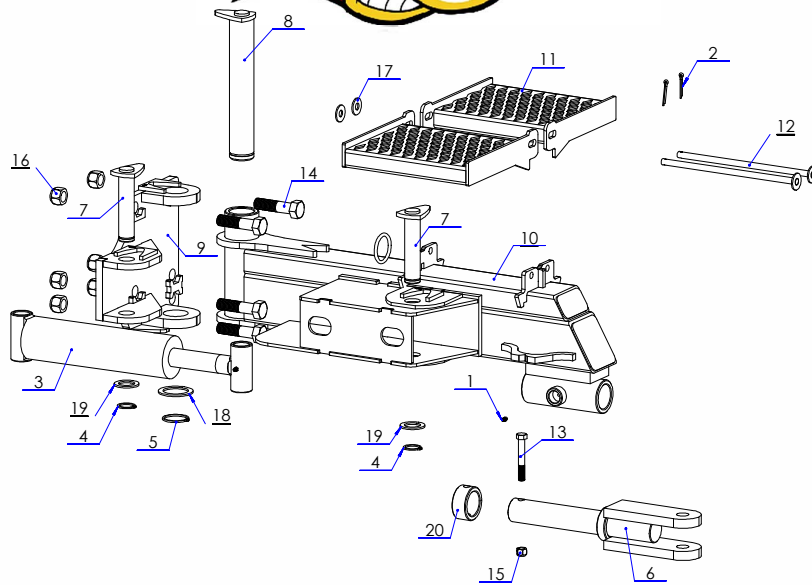
Parts List Small drawbar single-cylinder dismountable

Item	Part #	Description	Qty
1	310020	Grease nipple right 1/4"-28	1
2	310881	Split pin	2
3	59-076-59	Small detachable coupling	1
4	59-020-05	Agricultural trailer coupling	1
5	59-076-38	Stair tread metal sheet 9.5	2
6	59-076-74	Foot Step Pivot Assembly	2
7	301010	Bolt 7/8"-9 x 2 1/2" Lenght	6
8	300060	Bolt 1/2"-13 x 3 1/2" Lenght	1
9	301590	Nylon nut 7/8"-9	6
10	301510	Nylon nut 1/2"-13	1
11	301310	Flat Washer 1/2" Broad	2
12	59-076-105	Pole Bar Lock (shaft 1 15/16")	1



Part list
Small drawbar single-joint dismantlable cylinder for 105HD

No.	Part No.	Description	Qty
1	310020	Grease nipple right 1/4"-28	2
2	120443	Hydraulic cylinder 3" Dia. x 8" Stroke	1
3	307063	Snap-Ring 1 1/4" Thick	2
4	307075	Snap-Ring 2" Heavy	1
5	59-020-05	Agricultural trailer coupling	1
6	59-076-04	Cylinder pin	2
7	59-076-08	Pivot cylinder	1
8	59-076-15	Simple pivoting cylinder drive	1
9	59-076-56	Guide frame small single cylinder	1
10	300060	Bolt 1/2"-13 x 3 1/2" Length	1
11	301020	Bolt 7/8"-9 x 3 1/2" Length	6
12	301510	Nylon nut 1/2"-13	1
13	301590	Nylon nut 7/8"-9	6
14	59-076-034	Washer	1
15	59-076-035	Washer	2
16	59-076-105	Pole Bar Lock (shaft 1 15/16")	1



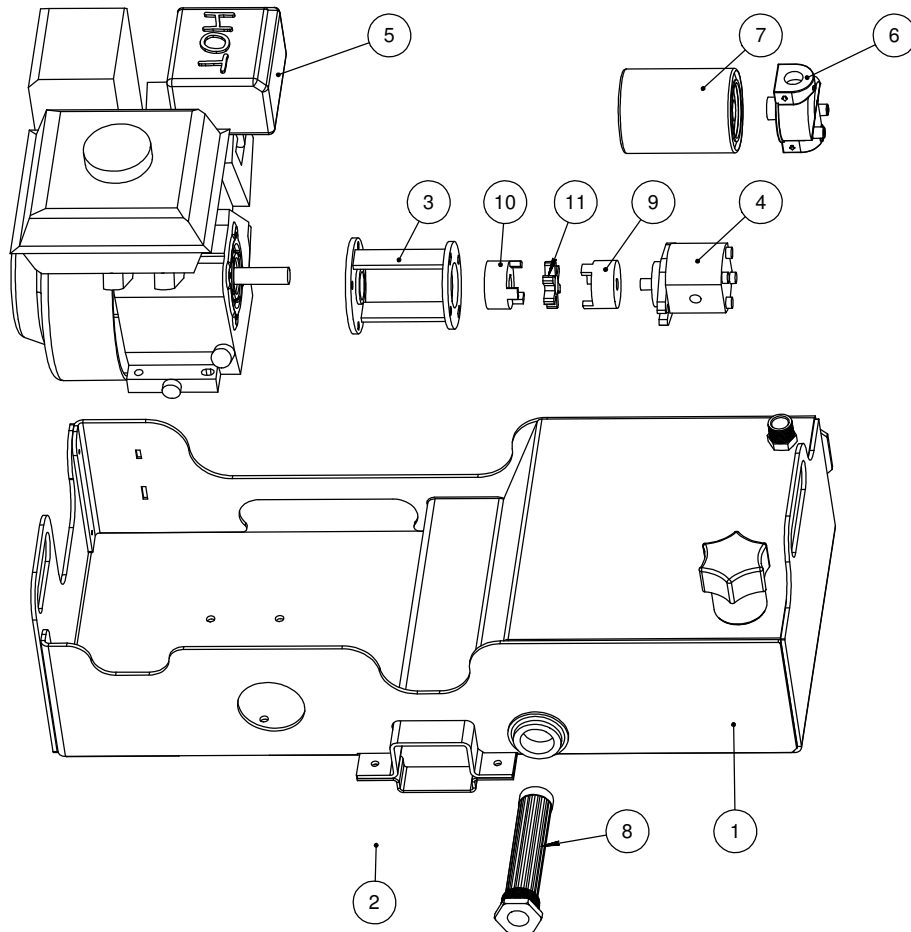
Part list

Small drawbar single joint cylinder removable for 105HD

Item	Part #	Description	Qty
1	310020	Grease nipple right 1/4"-28	2
2	310881	Split pin	2
3	120443	Hydraulic cylinder 3" Dia. x 8" Stroke	1
4	307063	Snap-Ring 1 1/4" Thick	2
5	307075	Snap-Ring 2" Heavy	1
6	59-020-05	Agricultural trailer coupling	1
7	59-076-04	Cylinder pin	2
8	59-076-08	Pivot cylinder	1
9	59-076-15	Simple pivoting cylinder drive	1
10	59-076-27	Guide frame small single cylinder	1
11	59-076-36	Stair tread metal sheet 9.5	2
12	59-076-74	Foot Step Pivot Assembly	2
13	300060	Bolt 1/2"-13 x 3 1/2" Length	1
14	301020	Bolt 7/8"-9 x 3 1/2" Length	6
15	301510	Nylon nut 1/2"-13	1
16	301590	Nylon nut 7/8"-9	6
17	301310	Flat Washer 1/2" Broad	2
18	59-076-034	Washer	1
19	59-076-035	Washer	2
20	59-076-105	Pole Bar Lock (shaft 1 15/16")	1



Characteristic hydraulic power unit GX 160

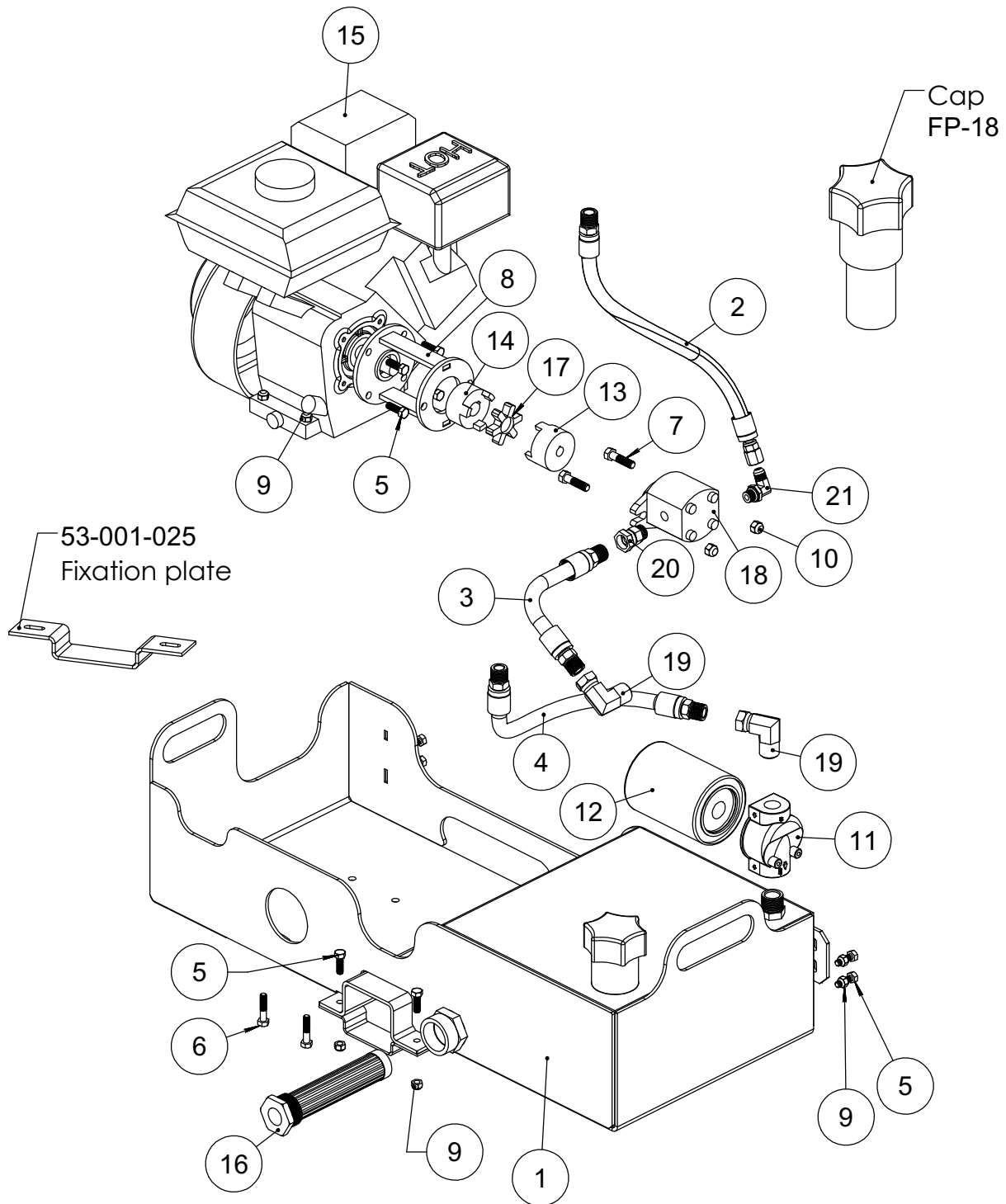


5.5 HP Hydraulic power unit Parts list

Item	Part #	Description	Qty
1	53-001-01	5.5 hp power unit base	1
2	53-001-025	Fixation plate	1
3	106000	Bell housing	1
4	108200	Galtec pump, 2 gal/min	1
5	108010	5.5HP Motor	1
6	190060	CP-750-10P Oil filter head	1
7	190050	CP-750-10P Oil filter	1
8	190020	Pre-Filtered LTM -10-100	1
9	140320	Coupling 1/2"	1
10	140340	Coupling 3/4"	1
11	140360	Love joy insert L095	1



Characteristic hydraulic power unit GX 160



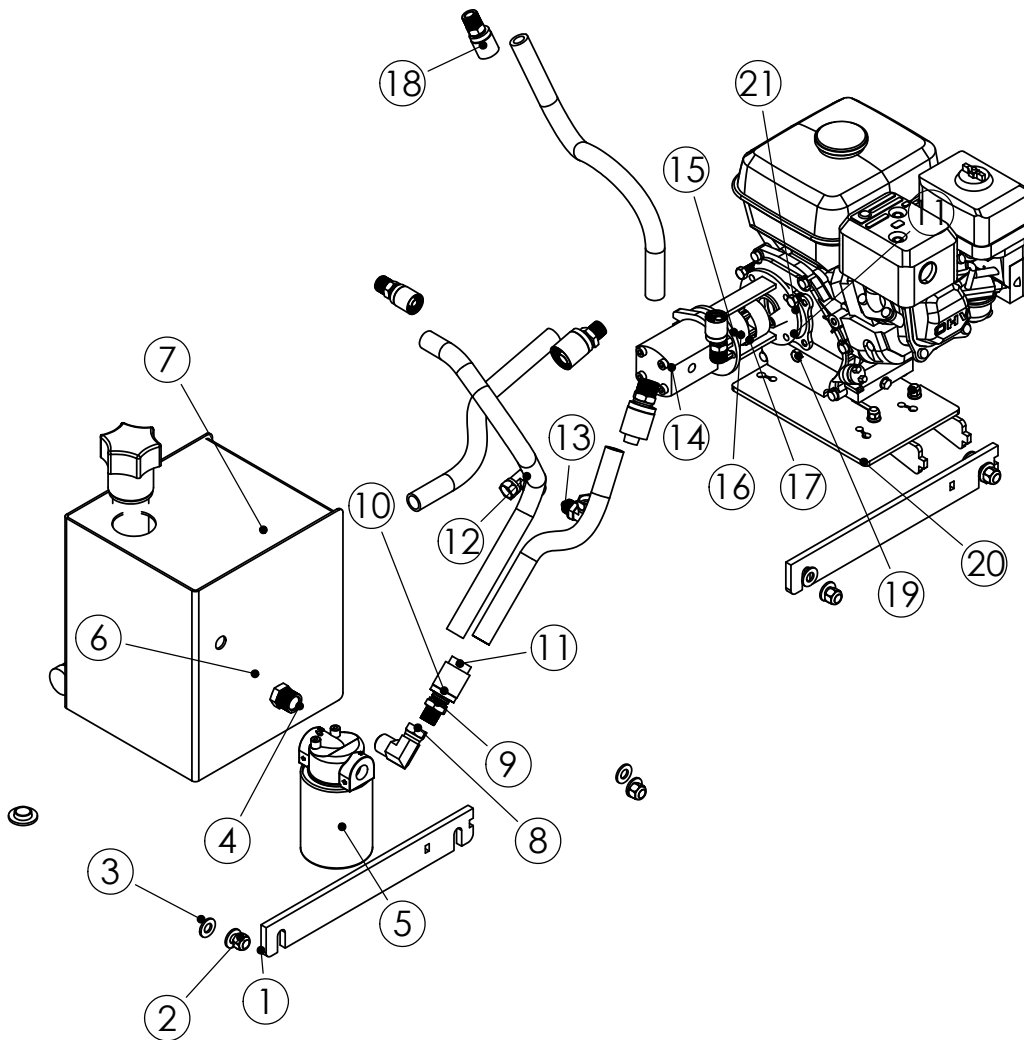


**Characteristic hydraulic power unit GX 160
Part list**

Item	Part #	Description	Qty
1	53-001-01	Tank / Motor Support	1
2	53-001-02	Hose 3/8 x 16" Long - JIC female swivel 3/8 - NPT male 1/2	1
3	53-001-03	Hose 1/2 x 6 3/4" Long-NPT male 1/2-NPT male 1/2	1
4	53-001-04	Hose 1/2 x 14" Long-NPT male 1/2-NPT male 1/2	1
5	B-05-18-16-14	Bolt 5/16"-18 x 1" Length x 7/8" Thread	10
6	B-05-18-24-14	Bolt 5/16"-18 x 1 1/2" Length x 7/8" Thread	4
7	B-06-16-24-16	Bolt 3/8"-16 x 1 1/2" Length x 1" Thread	2
8	106000	Bell housing	1
9	BLN-05-18	Lock Nut 5/16"-18	10
10	BLN-06-16	Lock Nut 3/8"-16	2
11	190060	Filter Oil Head CP-750-10P	1
12	190050	Oil Filtrer CP-750-10P	1
13	140320	Jaw Coupling 1/2"	1
14	140340	Jaw Coupling 3/4"	1
15	108010	Gaz Motor 5.5HP	1
16	190020	Filter Suction LTM-10-100	1
17	RUBER JAW COUPLING	Jaw Coupling Rubber	1
18	108200	Pump Galtec 1/2 GPM	1
19	9405-08-12	Elbow 90 deg 1/2" NPT FEMELLE SWI x NPT MALE- 3/4"	2
20	Adapteur Male ORB 0.5 - NPTF Swivel 0.5	Adapter Male ORB 1/2" - NPTF Swivel 1/2"	1
21	53-001-01	Elbow 90-Male JIC 3/8-Male ORB 9/8	1



Characteristic hydraulic power unit GX 160



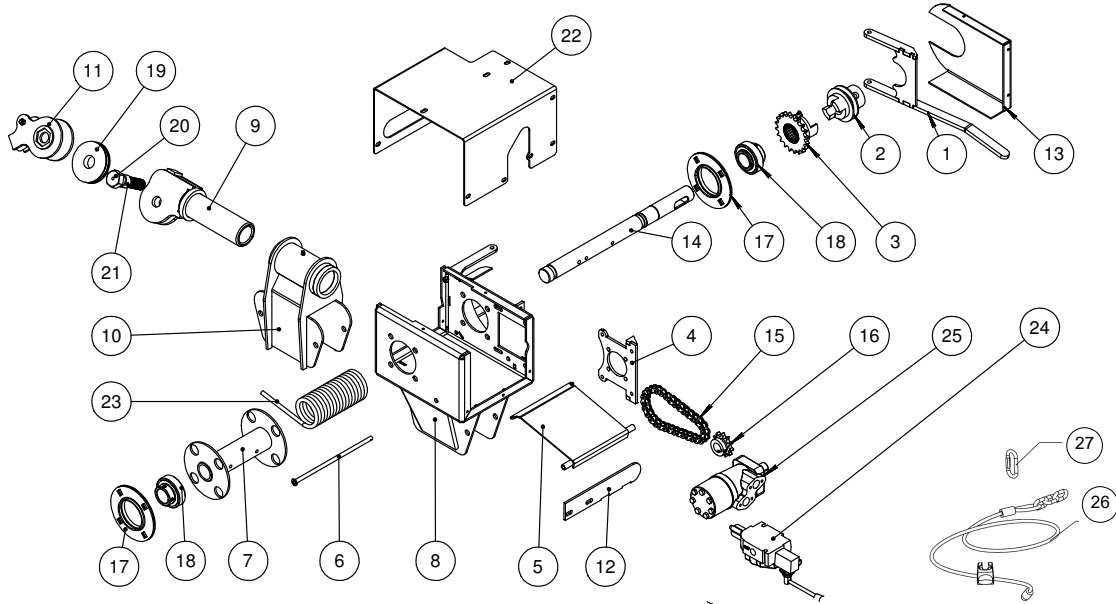


Hydraulic power unit GX 160 Part list

Item	Part #	Description	Qty
1	53-001-01	Tank / Engine Support	1
2	BLN-08-13	Lock nut 1/2"-13	1
3	BW5000EA	Flat washer 1/2" narrow	1
4	3109-12-08	Adapter Male 3/4"-14 female 1/2"-14	1
5	CP-750-10P	Filter Oil Head CP-750-10P	1
6	53-001-030	Oil container	1
7	53-001-029	Oil container lateral	1
8	9405-08-12	Elbow 90° NPSM Fem SWI x NPT Male - 1/2" x 3-4"	1
9	M12810-12-08	Coupler 3/4" x Male 3/4" NPT	1
10	M03400-12	Ferrule end 9/4" NPT	4
11	M03400-08	Ferrule end 1/2" Dia.	2
12	140040-021-101700-101700	Hydraulic Hose 1/2"	1
13	9515-08-06	Elbow 90° Male ORB Adjustable 1/2" - Female NPSM Swivel 3/8"	2
14	Pompe Galtech SPA 3.2	Pump Galtech SPA 3.2	1
15	Belt housing	Belt housing	1
16	Jaw coupling 5	Lovejoy 1/2 L095	1
17	BLN-06-16	Lock nut 3/8"-16	1
18	101700-101700	Assembly Hose 1/2" x 21"	1
19	GX160 Light	Engine Honda GX 160	2
20	53-001-012	Engine Support	1
21	Belt housing	Belt housing	1



4000 Lb Hydraulic Winch Parts List

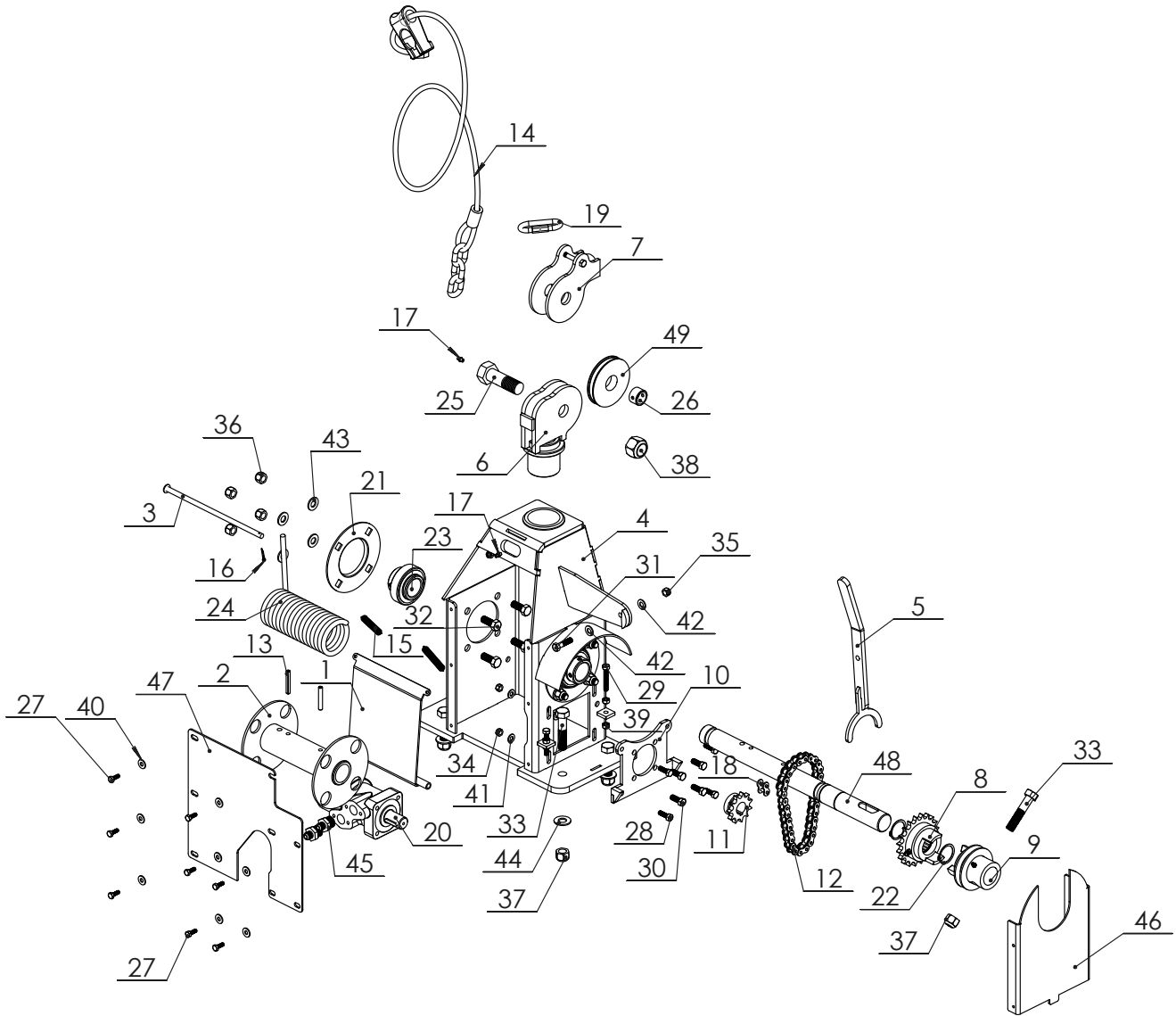


4000 Lb Hydraulic Winch Parts List

Item	Part #	Description	Qty
1	58-005-02	Clutch fork	1
2	58-000-07	Winch mobile clutch- Large, Medium, Small	1
3	58-000-06	Winch fixed clutch- Large, Medium, Small	1
4	58-000-09	Winch motor support	1
5	58-004-01	Winch tensioner	1
6	58-004-04	Cable tensioner fixation pin	1
7	58-004-02	Winch roller	1
8	58-008-01	Winch housing	1
9	58-000-03	Swivel head- Large, Medium, Small	1
10	58-005-05	Cable guide fixation	1
11	58-000-04	Swivel head fixation- large, Medium, Small	1
12	58-005-013	Winch housing- large, Medium	1
13	58-005-011	Boom winch protector	1
14	58-004-009	Boom winch shaft	1
15	309080	Chain, no. 50, 16 links	1
16	150010	Gear wheel #50-11 teeth heavy-duty	1
17	150151	Flange bearing	2
18	150040	Bearing insert	2
19	58-000-024	Modified pulley	1
20	B-16-08-64-36	Modified bolt	1
21	89-20-16-12	Plastic tubing 1 1/4" O.D.	1
22	58-000-036	Winch cover	1
23	304000	Cable 1/4 Dynima 110'	1
24	SAL 623100110	Salami vdm6 hydraulic valve, 1 section	1
25	108060	160 cc Hydraulic motor	1
26	310720	Logging choker	1
27	310725	Quick link	1



Characteristic hydraulic winch 4000 Lb



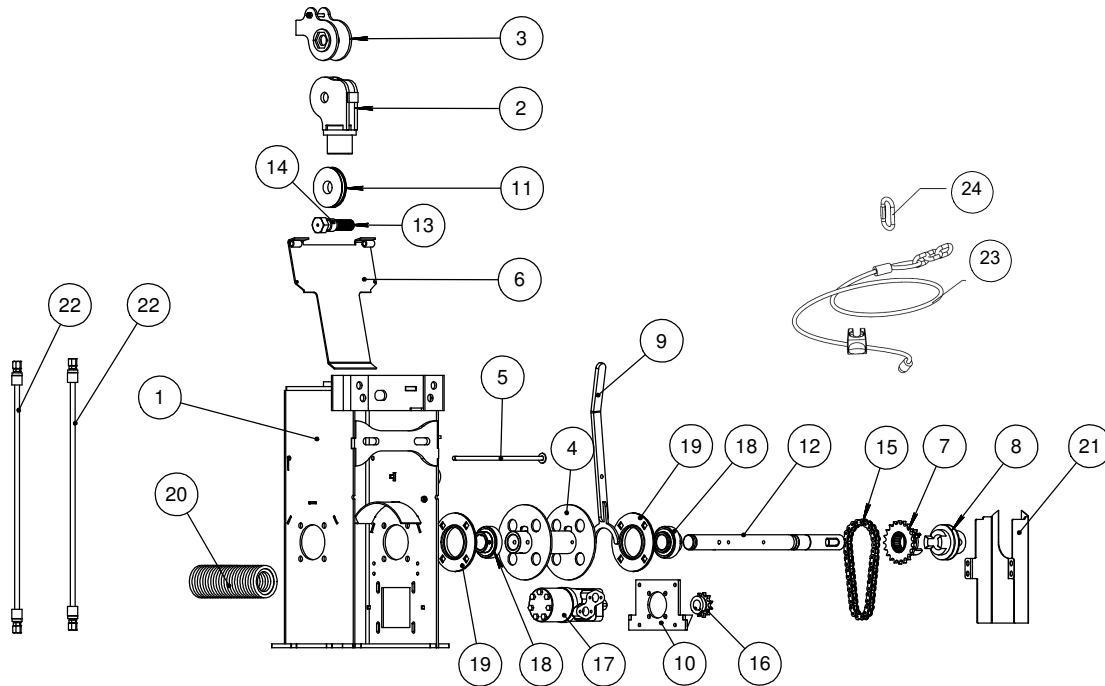


4000 Lb Hydraulic Winch Parts List

Item	Part #	Description	Qty
1	58-004-01	Winch tensioner	1
2	58-004-02	Reel winch	1
3	58-004-04	Cable tensioner fixing axis	1
4	58-052-01	Winch frame	1
5	58-052-02	Clutch fork arm large, medium	1
6	58-052-04	Winch head	1
7	58-000-04	Swing side snatch large, medium, small	1
8	58-000-06	Fixed Winch jaw clutch large, medium, small	1
9	58-000-07	Mobile Winch jaw clutch large, medium, small	1
10	58-000-09	Winch motor support	1
11	150010	Gear #50-11 heavy duty	1
12	309080	Chain no 50 16 mesh	1
13	310880	Spring pin 5/16" O.D. x 2"	2
14	310720	Forestry choker chain	1
15	309200	Spring - Extension type	2
16	310831	Cotter pin 1/8 DIA. X 1/2" LG.	1
17	310020	Grease nipple right 1/4"-28	2
18	308910	Chain link Serie #50	1
19	310725	Quick link	1
20	108060	Hydraulic Engine 160cc	1
21	150151	Bearing flange UCPF 208-24 WOODBPFUC150 (duo) WINCH	1
22	307036	Snap-Ring 1 1/2"	2
23	150040	Bearing "insert"	2
24	304000	Rope 1/4 dyneema 110'	1
25	B-16-08-64-36	Modified bolt	1
26	111000	Bushing 1 x .75	1
27	0	Bolt 1/4"-20 x 3/4" Lenght	8
28	300700	Bolt 5/16"-18 x 1" Lenght	4
29	300720	Bolt 5/16"-18 x 2" Lenght	2
30	300500	Bolt 3/8"-16 x 1" Lenght	4
31	300520	Bolt 3/8"-16 x 1 1/2" Lenght	1
32	300020	Bolt 1/2"-13 x 1 1/4" Lenght	8
33	300840	Bolt 5/8"-11 x 3" Lenght	5
34	301560	Lock nut 5/16"-18	4
35	301550	Lock nut 3/8"-16	1
36	301510	Lock nut 1/2"-13	8
37	301570	Lock nut 5/8"-11	5
38	301500	Lock nut 1"-8	1
39	301850	Hex nut 5/16"-18	4
40	301400	Flat washer 1/4" Broad	10
41	301390	Flat washer 5/16" Narrow	4
42	301350	Flat washer 3/8" Narrow	2
43	301310	Flat washer 1/2" Narrow	8
44	301360	Flat washer 5/8" Narrow	4
45	102710	Male 3/8" - JIC x Male 7/8" - ORB	2
46	58-052-011	Protective cover of Winch	1
47	58-052-036	Winch top	1
48	58-004-009	Shaft boom Winch	1
49	58-000-024	Modified pulley	1



6000 Lb Hydraulic Winch Parts List

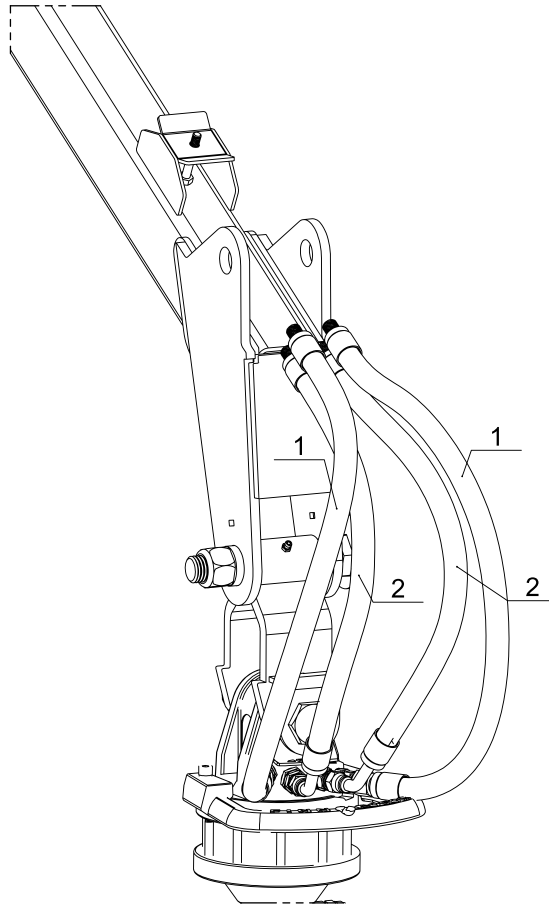


6000 Lb Hydraulic Winch Parts List

Item	Part #	Description	Qty
1	58-013-01	26" Winch housing	1
2	58-013-04	Winch head	1
3	58-000-04	Swivel head fixation - Large, Medium, Small	1
4	58-000-05	Winch roller - Large, Medium	1
5	58-007-03	Cable tensioner pin	1
6	58-007-05	Winch tensioner - Large, Medium	1
7	58-000-06	Winch fixed clutch - Large, Medium, Small	1
8	58-000-07	Winch mobile clutch - Large, Medium, Small	1
9	58-000-08	Clutch arm - Large, Medium	1
10	58-000-01	Winch motor support - Large, Medium	1
11	58-000-024	Modified pulley	1
12	58-000-020	36" Winch roller axis	1
13	58-000-006	Modified bolt	1
14	Bush plast 1 1/4 ext x 1 int	Plastic tubing 1 1/4" O.D.	1
15	1RIV 50	Chain series #50 - 36 rollers	1
16	150010	Gear wheel #50-11 teeth heavy-duty	1
17	108070	Hydraulic motor 315 cc	1
18	150040	Bearing insert	2
19	150151	Flange bearing	2
20	304010	Nylon cable 5/16" x 110' long	2
21	58-005-011	Boom winch protector (Part)	1
22	140030-055-101820-101820	Hydraulic Hose 3/8	2
23	310720	Logging choker	1
24	310725	Quick link	1



Hydraulic hoses
Part no. 60-021

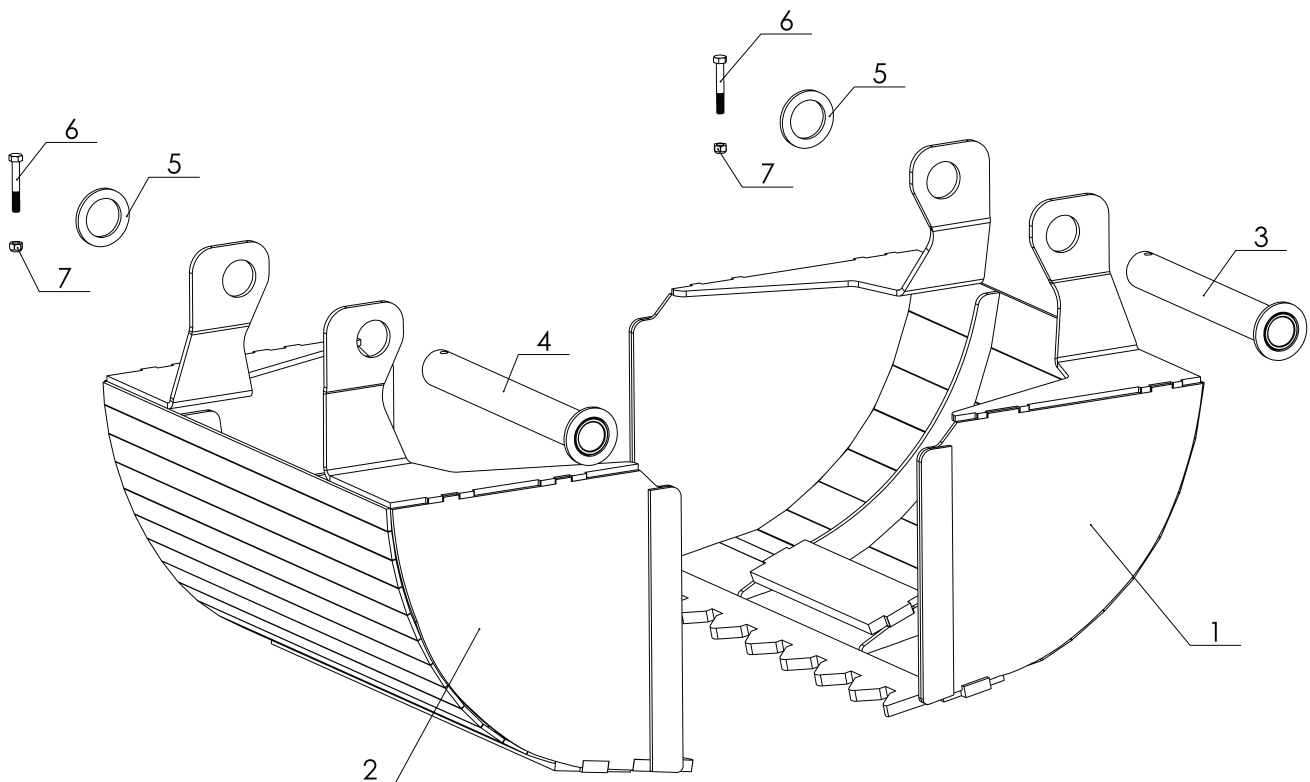


PARTS LIST - HYDRAULIC HOSES, PART NO. 60-021

ITEM	PART NO.	DESCRIPTION	QTY
1	140030-020-102200-102300	Hydraulic hose assembly 3/8" x 20" - M20813-06-06 - M10510-06-06	2
2	140030-020-100300-102300	Hydraulic hose assembly 3/8" x 20" - M20843-06-06 - M10510-06-06	2



20" Dipper Dredger for 28" Grapple
Part no. 57-026

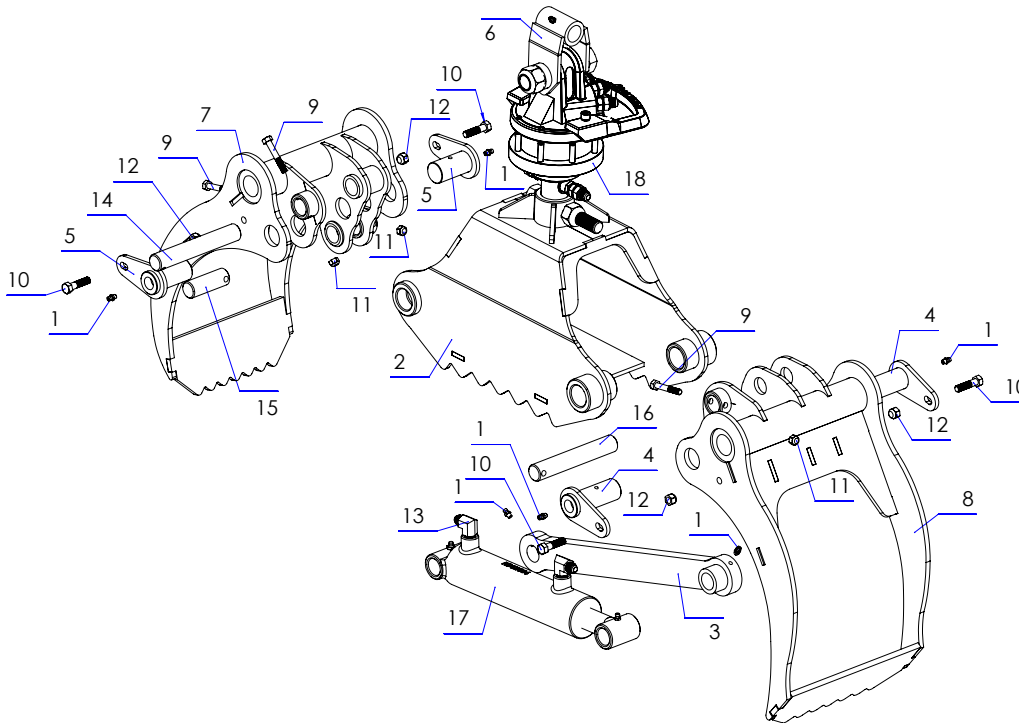


PARTS LIST - 20" DIPPER DREDGER ASSEMBLY FOR 28" GRAPPLE, PART NO.57-026

ITEM	PART NO.	DESCRIPTION	QTY
1	57-026-01	20" Dipper dredger bucket for 28" grapple, narrow jaw	1
2	57-026-02	20" Dipper dredger bucket for 28" grapple, wide jaw	1
3	57-026-03	Lock, narrow jaw	1
4	57-026-04	Lock, wide jaw	1
5	57-026-021	Washer	2
6	B-05-18-32-14	Bolt 5/16"-18 x 2" long	2
7	BLN-05-18	Lock nut 5/16"-18	2



Parts list grapple 28"



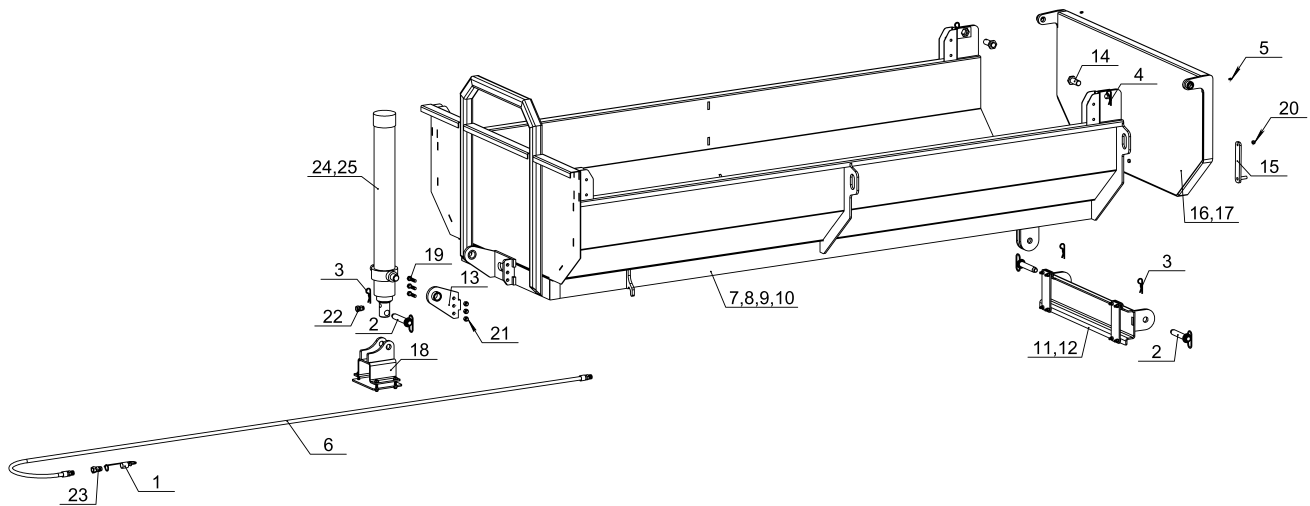
Part list - Grapple 28"

No.	Part #	Description	Qty
1	310020	Grease nipple 1/4"-28	6
2	57-022-01	Frame clamp 28" Hardox	1
3	57-022-03	Retraction arm 28" Hardox	1
4	57-022-04	Assembly pine pivot for clamp	2
5	57-022-05	Assembly pine pivot for clamp	2
6	57-022-06	Grapppler link 28" (Welding assembly)	1
7	57-022-14	Interior clamp 28" Hardox	1
8	57-022-15	Exterior clamp 28" Hardox	1
9	300730	Bolt 5/16"-18 x 2" Lenght	3
10	300520	Bolt 3/8"-16 x 1 1/2" Lenght	4
11	301560	Nylon nut 5/16"-18	3
12	301550	Nylon nut 3/8"-16	4
13	100900	Serie 5405 - Elbow 90° - Male JIC 37° - Male NPT - 9/16" x 3/8"	2
14	57-022-017	Pivot shaft	1
15	57-022-026	Pivot shaft	1
16	57-022-027	Pivot shaft	1
17	120110	Hydraulic cylinder 2" Dia. x 6" Stroke	1
18	199311	Rotor CR 100-W25 A20-111	1



Gravel bin assembly

Part No. 31-030, 31-040, 31-050, 31-060





Gravel bin assembly

Part No. 31-030, 31-040, 31-050, 31-060

PARTS LIST - GRAVEL BIN ASSEMBLY

ITEM	PART NO.	DESCRIPTION	10' BIN	10' BIN WITH	12' BIN	12' BIN WITH
			FOR 10-78 HV TRAILER P/N: 31-030	CYLINDER FOR 10-78 HV TRAILER P/N: 31-040	FOR 12-86 HV TRAILER P/N: 31-050	CYLINDER FOR 12-86 HV TRAILER P/N: 31-060
			QTY	QTY	QTY	QTY
1	140000	Dust caps 1/2", red	-	1	-	1
2	310830	Quick release pin 1" x 4 3/4" long	2	3	2	3
3	310833	Cotter Pin 5/32 x 2 3/4" long	2	3	2	3
4	310832	Cotter Pin 3"	2	2	2	2
5	310020	Grease fitting 1/4"-28	2	4	2	4
6	140030-144- 101740-101740	Hose assembly 3/8" - 144" long	-	1	-	1
7	31-030-01	Gravel bin for 10-78 HV trailer	1	-	-	-
8	31-040-01	Gravel bin with cylinder for 10-78 HV trailer	-	1	-	-
9	31-050-01	Gravel bin for 12-86 HV trailer	-	-	1	-
10	31-060-01	Gravel bin with cylinder for 12-86 HV trailer	-	-	-	1
11	31-000-02	Rear hinge 12-86 HV	-	-	1	1
12	31-000-03	Rear hinge 10-78 HV	1	1	-	-
13	49-001-03	Removable cylinder mounting plate	-	1	-	1
14	59-035-08	Pin	2	2	2	2
15	59-064-03	Handle	1	1	1	1
16	59-064-06	Rear panel 30"	1	1	-	-
17	59-068-04	Rear panel 36"	-	-	1	1
18	59-000-38	Cylinder mount ear assembly	-	1	-	1
19	300030	Bolt 1/2"-13 x 2" long	-	3	-	3
20	301550	Nylon nut 3/8"-16	1	1	1	1
21	301510	Nylon nut 1/2"-13	-	3	-	3
22	103500	Hydraulic fitting 9315 Male ORB - Female NPT Swivel Plug	-	1	-	1
23	109010	Quick Coupling Male x Female 1/2"-NPT	-	1	-	1
24	121110	Telescopic cylinder 90" stroke	-	1	-	-
25	121120	Telescopic cylinder, 108" stroke	-	-	-	1



Operation

General safety rules:

Read this instruction manual carefully before starting the loader. The technical data in this manual contains important information. Improper use can result in injury and damage to the machine .

Using a loader requires increased knowledge and experience. You must learn and know the behavior of the loader and practice using it. Study and practice the movement patterns with small loads until you master the machine completely. Stop all operations immediately if any bystanders enter the work zone (20 m).

Woody loaders are intended for normal use in the agricultural and forestry sectors. They must be used only by persons trained in the handling of this type of machinery.

. Before connecting the loader to the tractor's hydraulic system, you must read the tractor's instruction manual to ensure proper connections.

. Be extremely careful when connecting the loader to the tractor or the trailer to the tractor, as well as when detaching it.

. When operating, make sure everyone remains in the safety zone, outside of the loader risk area. The operator must have full visibility of the work zone.

. When operating, do not insert your hand or any other part of your body into the machine or under the load. Do not risk getting stuck between the different parts of the log loader or between the tractor and the trailer.

. Do not forget to raise the stabilizers before moving the equipment.

. When loading, always engage the tractor handbrake.

. Never leave the boom in a raised position without having control of the loader.

. Never use the loader to pull, push or hit.

. Be particularly careful when loading and unloading heavy materials.

. Never use the loading device during transport.

. To stop the machine, lower the loader boom and grapple on a firm surface, turn off the engine, engage the handbrake and remove the key from the ignition to prevent unauthorized use.

. The loader is not intended for lifting people.

. Be very careful when loading or unloading near high voltage lines. Keep a safe distance from live cables.



Safety Instructions

If the overload protection of the hydraulic system is not properly adjusted or certain system functions are altered, safety cannot be ensured.

- . Always lower the hydraulic stabilizers before each operation to avoid overturning.
- . Always check that any unauthorized personnel remains outside the work risk area.
- . Never stand under a suspended load.
- . Make sure that the tractor and trailer are always on firm ground so that there is no risk of overturning. When loading, use the stabilizers to prevent tilting of the loader.
- . Make sure you always have a visual view of the work area.
- . Do not work in conditions where you may get your fingers caught or hurt yourself.

When there is a risk of overturning, immediately lower the stick boom with the control lever.

- . Hold the lever in this position until the load is on the ground. Do not interrupt the lowering movement as the risk of overturning will increase if the load stops abruptly.
- . If the tractor rolls over, follow the instructions in the cab. Do not jump out of the cab. You could end up under the load during a fall or under the tractor.

Note: Even if the stabilizers have been lowered to the ground, the risk of overturning is greater when the trailer is empty or partially loaded.

Cracks in hydraulic hoses

- . In the event of pressure loss in the hydraulic fluid or cracks in the hydraulic hoses, you must immediately shut down the tractor engine and lower the load to the ground. Stop the hydraulic flow. Repair the leak.
- . If the main pressure hose between the tractor and the control system is cracked, you must interrupt the oil flow by disconnecting the lever control associated with the tractor's hydraulic distributor or by shutting off the engine with the OFF button.



Safety Instructions

Driving on the Road

Observe the following instructions to avoid any risk of accident.

Position During Transport

- . If there is no load, position the loader boom as low as possible on the trailer. Make sure that the grapple and the rotator are firmly attached to the trailer, so that there is no risk of the loader rolling over during transport.
- . Make sure that none of the additional equipment connected to the loader is likely to cause an accident during transport.

Control is Important

- . You must constantly control the machine at all times and in all situations.
- . Check that the "slow vehicle" plate and the reflective signals are correctly positioned. Check if the trailer lights are functioning correctly and check the tire pressure.
- . The total permitted weights (in particular the weight of the axle) and the transport dimensions must never be exceeded.
- . You must adapt your speed to the driving situation. Drive with caution when one side is tilted, as well as on sloping ground. There is a risk of over turning.
- . Respect the laws of the road and applicable regulations.
- . The braking distance of a tractor equipped with a trailer is longer than for other vehicles, beware of the risk of skidding and check for irregularities in the road.
- . Secure the load and other loose parts securely.

Oil and Grease Caution

- . Avoid any oil or grease contact with the skin during maintenance. Wear appropriate protective clothing.
- . Never wash your hands with lubricating oil or grease. It may damage your skin. If your skin is irritated after contact with oil or grease, contact a doctor immediately.
- . When servicing, waste oil should be disposed of in accordance with local regulations.



Safety Instructions

Welding Repair

. If a repair or modification requires the welding of certain parts, you must first contact your dealer for necessary instructions. Improper welding or negligence during welding can cause sudden machine breakdowns.

Working in Extreme Conditions

. The recommended ambient temperature for the operation of this machine is between $-20\text{ }^{\circ}\text{C}$ and $+30\text{ }^{\circ}\text{C}$. Low or high temperatures result in increased wear and stress on joints and hoses. In addition, steel wears faster, and cracks can occur.

. When working in extreme conditions, reduce loads to prevent damage. In case of low temperature let the hydraulic oil circulate freely during several minutes. Then operate each

1 times to soften the joints and hoses before applying full pressure. When it is extremely hot, pay attention to the oil temperature. A temperature above $80\text{ }^{\circ}\text{C}$ alters the properties of the oil and damages joints and hoses.

Maintenance and Servicing Safety Instructions

. Regular maintenance and service ensure optimal and cost effective operation.

. Note: Failure to follow the instructions in this manual will void all warranties related to this machine. Regular and proper maintenance are a prerequisite for warranty coverage.

. Read the instructions before servicing the machine. Each maintenance task requires reading and following instructions. Maintenance and lubrication should be done at the recommended intervals.

. Always use tools suitable for the maintenance / servicing tasks involved. Wear protective clothing and glasses.

. Shut off the tractor engine and remove the ignition key. If the engine has to run during certain maintenance operations, please stay away from any moving parts of the machine.

. Be extremely careful with pressurized oil. Oil under high pressure easily penetrates the skin. In case of accident, consult a doctor immediately.



Safety Instructions

Maintenance and Servicing Safety Instructions

- . Hot oil can cause burns. Inhalation of hot oil vapor can cause breathing difficulties.
- . If a hose bursts and you get oil on your skin, it is not dangerous. However, avoid oil contact with eyes and nose. If you get oil in your eyes or in your respiratory tract, contact a doctor immediately.
- . Keep explosive and flammable liquids away from sparks and open flames.

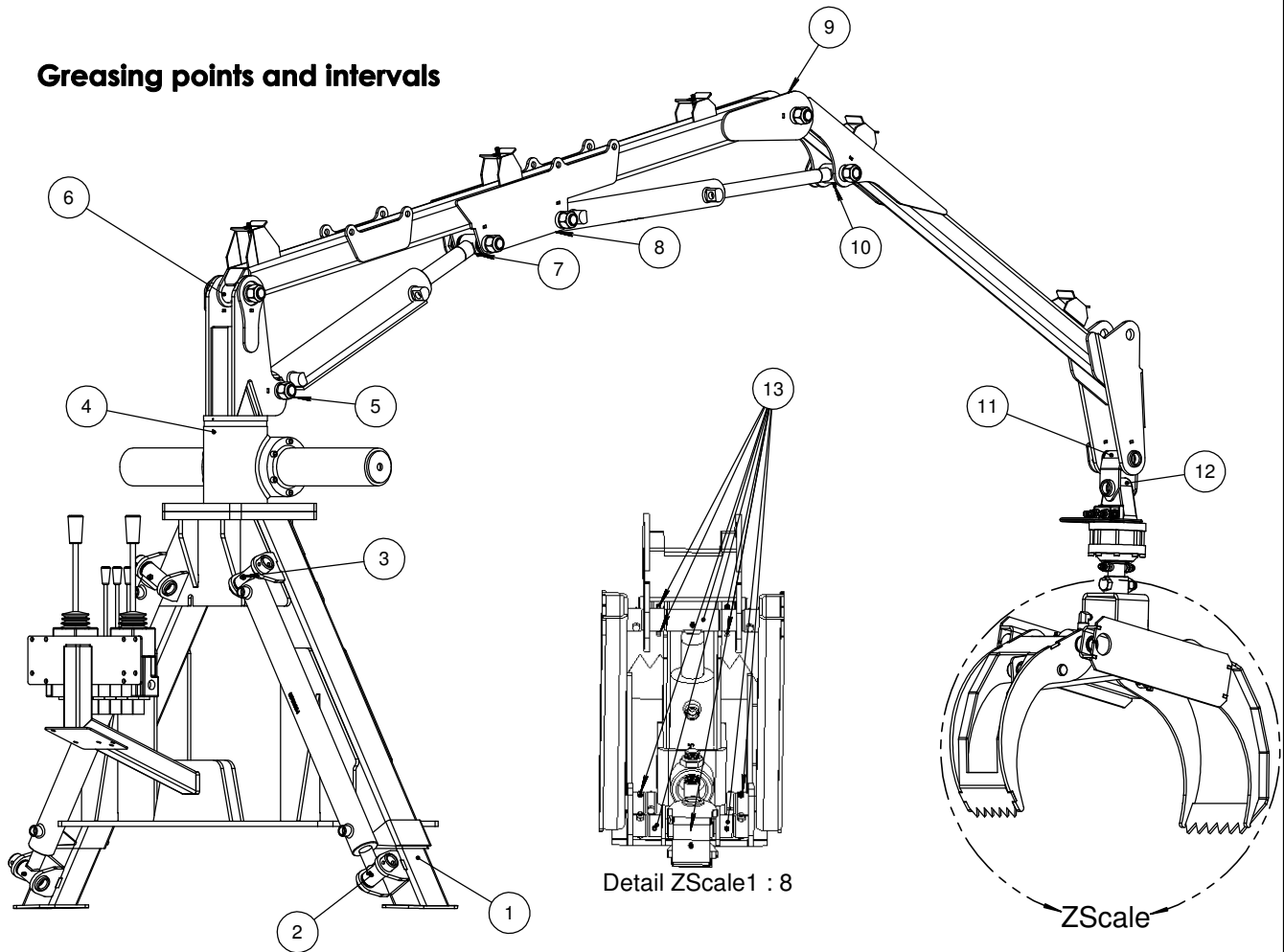
Daily inspections

It is important to inspect the equipment daily. If you notice a defect, you must repair it immediately.

- . When under load pressure, worn bolts can provoke a risk of rupture. If cracks are detected on the loader, any operation in progress must be stopped immediately.
- . Damaged hoses must be replaced immediately. Check for leaks. Oil leaks create a risk of accidents and can harm the environment.
- . Check the bolts and tighten the bolts if necessary.
- . Perform the various movement patterns of the loader to verify that all functions are intact and working properly.

Safety Instructions

Greasing points and intervals

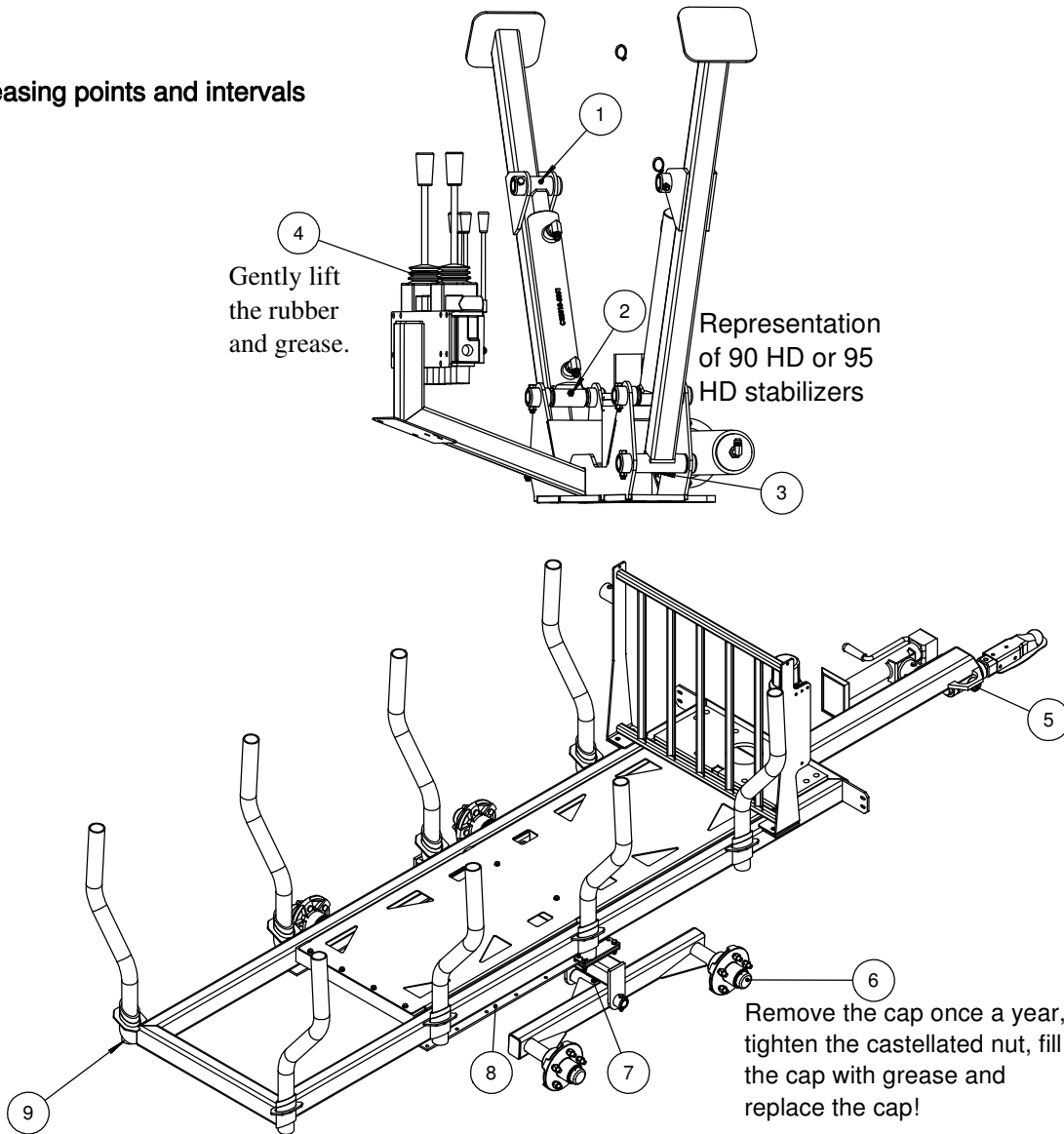


Item	Greasing point	Lubricating oil	Greasing Interval hourly / yearly
1	Stabilizer	Bushing grease	Once a year, generously
2	Cylinder pin	Bushing grease	Once a year
3	Cylinder pin	Bushing grease	Once a year
4	Pinion	Bushing grease	Every 10 hours
5	Cylinder pin	Bushing grease	Every 10 hours
6	Main boom pin	Bushing grease	Every 10 hours
7	Cylinder pin	Bushing grease	Every 10 hours
8	Cylinder pin	Bushing grease	Every 10 hours
9	Main boom pin	Bushing grease	Every 10 hours
10	Cylinder pin	Bushing grease	Every 10 hours
11	Grapple yoke pin	Bushing grease	Every 10 hours
12	Rotator pin	Bushing grease	Every 10 hours
13	Grapple pins	Bushing grease	Every 5 hours



Safety Instructions

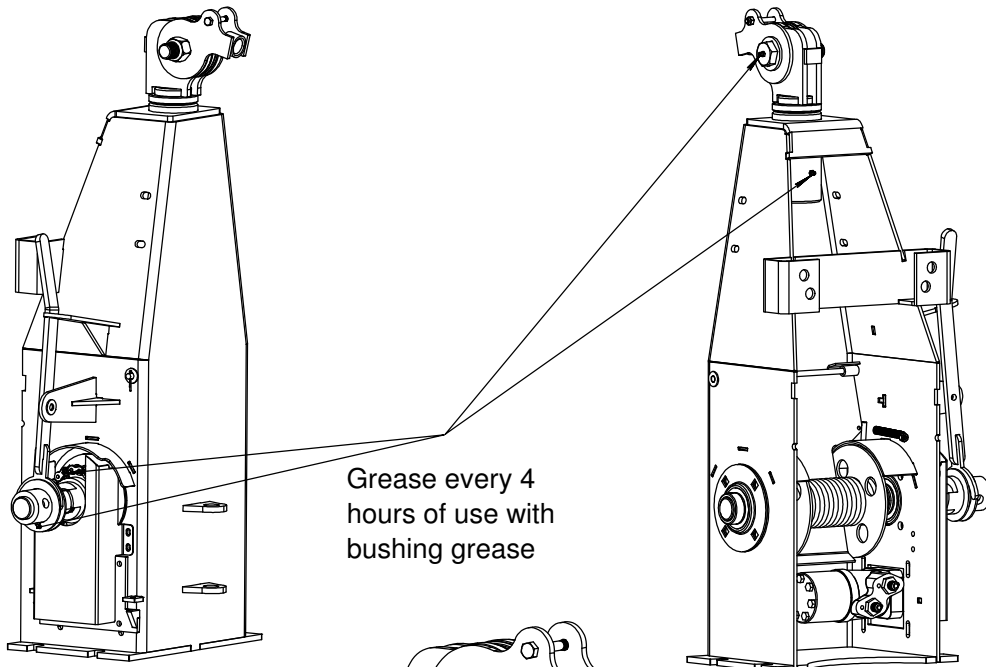
Greasing points and intervals



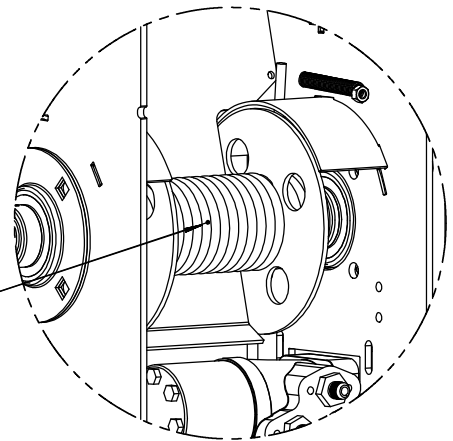
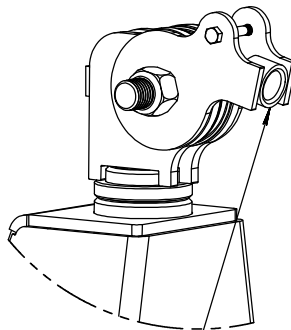
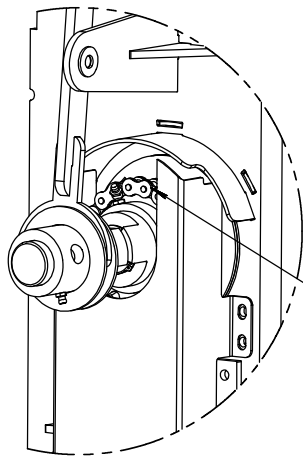
Item	Greasing point	Lubricating oil	Greasing Interval hourly / yearly
1	Stabilizer pin	Bushing grease	Every 10 hours
2	Stabilizer pin	Bushing grease	Every 10 hours
3	Stabilizer pin	Bushing grease	Every 10 hours
4	Control ball joints	Bearing grease	Every 50 hours or yearly
5	Column pins	Bushing grease	Every 10 hours
6	Hub 3500 lb.	Bearing grease	Every 50 hours or yearly
7	Tandem pin	Bushing grease	Every 10 hours
8	Hydraulic axle slide	Bushing grease	Every 50 hours or yearly
9	Posts	Bushing grease	One a year



Maintenance and safety instructions for proper use of the 6000 lb. hydraulic winch



Grease every 4
hours of use with
bushing grease

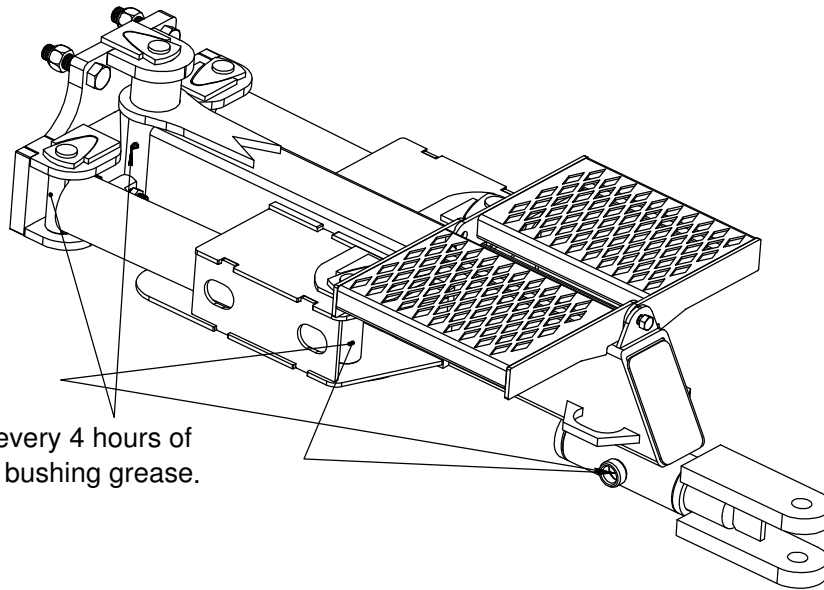


Caution: Risk of crushing
your finger or hand
and could even lead to
death!!!

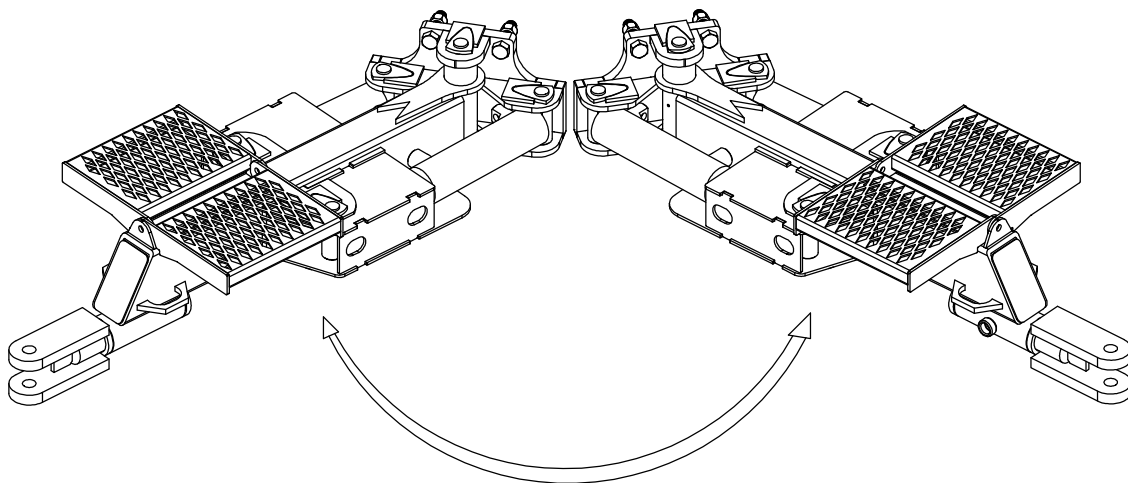


Maintenance and safety instructions for proper use of a single drawbar

(Image for illustrative purposes only)



Grease every 4 hours of
use with bushing grease.



Make sure that no one is standing in
the perimeter and also make sure no
one is standing on the step!



Safety Instructions

Storage

If you plan to stop using the loader for a long period of time, it should be cleaned carefully. Note that high pressure cleaning is not recommended! After cleaning, make a visual inspection for any cracks (if you find any, you must have them repaired before the next use of the loader) all grease nipples must be lubricated. The grease is used to evacuate water and thus neutralize corrosion and wear.

- . Store the loader under a roof. If this is not possible, cover it with a tarpaulin.
- . Place loader boom and grapple in the transport position.

Note: A stored loader is not a play area for children.



1 YEAR LIMITED WARRANTY

Les Équipements Woody Inc.

Warranty Qualifications

Les Équipements Woody Inc. (hereinafter referred to as "Woody") warrants its Log Loader (hereinafter referred to as the "Product") against defects in material or factory workmanship, subject to all the terms and conditions stated herein.

All Products manufactured by Woody and used for domestic purposes (excluding commercial and industrial use) are covered by a one (1) year warranty applicable from the purchase date, except in particular cases when the warranty might be modified according to adjustments specified on the sales contract.

The warranty extends only to the original purchaser (hereinafter referred to as the "Buyer") of the Product and not to other purchasers or transferees unless agreed to in writing by Woody that the mechanical and electrical components will be free of defects in material and workmanship for the warranty period. The warranty covers all the parts of the new Product, except the hydraulic hoses, the hydraulic fittings and the electrical wires, and includes the labor performed by Woody or by a Woody authorized Dealer (hereinafter referred to as the "Dealer").

Warranty Repair and Replacement Service

All warranted repairs must be performed by Woody or by an authorized Dealer with the written consent of Woody, otherwise the warranty will be voided. Woody reserves the right to either repair or replace, without cost to the buyer any part judged defective on grounds of defective materials or workmanship. It also reserves the right to determine if the defect resulted from lack of maintenance or incorrect or abusive use of the Product.

In the event of any failure caused by a defect in material or in factory workmanship covered by this warranty, the Buyer shall: (1) notify Woody of the nature of the problem without delay; (2) stop using or operating the Product, unless authorized in writing by Woody.

Warranty service shall be performed at the point of purchase of the Product either by Woody or by a Dealer using parts provided by Woody.

If the Product was purchased directly from Woody, the Buyer shall return either the Product or the defective parts "prepaid" to Woody without delay. If Woody deems that the parts are in fact defective, it shall repair or replace the parts and, when the Product is returned to Woody, install them free of charge to the Buyer.

If the Product was purchased from a Dealer, Woody shall provide the replacement parts to the Buyer through the intermediary of the Dealer. The Dealer shall install the parts and return the replaced parts to Woody, "prepaid" by the Buyer, within thirty (30) days of the repairs. The parts and their installation shall be without charge to the Buyer providing that the replaced parts are proven defective to Woody's satisfaction.

In all cases, all costs related to the transportation of parts or of the Product to and from Woody or the Dealer, any premium charged for overtime labor requested by the Buyer or for any service and/or maintenance shall be the sole responsibility of the Buyer.

All parts replaced under the warranty shall remain the property of Woody.

If the Buyer fails to follow any of the above procedures or if the parts are not proven to be defective to Woody's satisfaction, the Buyer shall not benefit from the warranty.



No Dealer Warranty

The Dealer has no authority to make any representation or promise on behalf of Woody, or to modify the terms or limitations of this warranty in any way.

Warranty Exclusions

This warranty does not cover the following:

Product needs periodic parts and service to perform well. This warranty does not cover repair when normal use has exhausted the life of a part or the equipment as a whole or by lack of reasonable and proper maintenance, by lack of proper protection during storage, by failure to follow operating instructions and/or failure to operate the Product according to the specifications outlined by Woody.

This warranty does not apply to damage caused to the Product or machinery by the Buyer or Dealer during installation of the Product or due to improper installation of the Product.

This warranty will not apply to parts and/or labour if this Product is deemed to have been misused, neglected, involved in an accident, abused or defects caused by any alteration or modification of the Product not approved in writing by Woody.

Other Exclusions

This warranty excludes:

- Cosmetic defects such as paint, decals, etc.
- Any damage resulting from overturning the machine.
- Failures due to acts of God and any other major force events beyond Woody's control.
- Problems caused by parts that are not original Woody parts.
- Certain parts are guaranteed by their respective manufacturer.

Limits of Implied Warranty and Consequential Damage

Woody disclaims any obligation to cover any material or personal damages, including loss of time, loss of income use of this Product, replacement rental, freight or any other damages caused by a defective Product or any incidental or consequential claim by anyone from using this Product.

Contact information

Address

Les Équipements Woody Inc.
205 rue Commerciale
Saint-Odilon (QC)
Canada G0S 3A0

www.equipementswoody.com

Parts and Service

T. 418 464-2748
F. 418 464-2746
info@equipementswoody.com